



WWW.C4MECCANICA.IT



T SERIES

MULTIFUNCTIONAL HYDRAULIC
AUGERS FOR EXCAVATORS
FROM 1.5 TO 10.5 TONS

**T15/TV15
T20/TV20
T50/TV50**

HYDRAULIC AUGERS

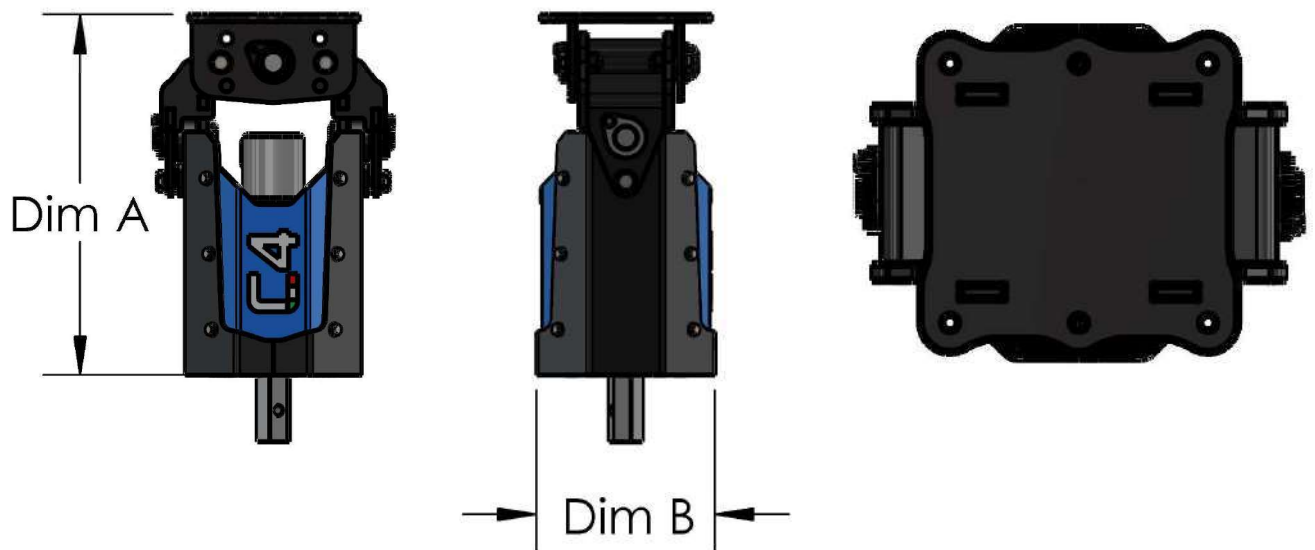
T SERIES

T15/TV15

T20/TV20

T50/TV50

MODEL (multifunctional)	T15	T20	T50
MODEL (1-pin attachment without locks)	TV15	TV20	TV50
EXCAVATOR (ton)	1.5-3	3-5	5-10.5
A DIMENSION (mm)	475	600	720
B DIMENSION (mm)	250	300	300
WORKING TORQUE (N/m)	1500	2500	5000
WEIGHT (Kg)	80	135	172
OIL FLOW (l/min)	20-40	30-60	45-80
WORKING PRESSURE (bar)	160	180	200
ENGINE DISPLACEMENT (cc)	125	200	250
HEXAGON	50	50/70	50/70



T/TV SERIES

Traction with reduced motor, inside the frame, protected from impacts or strokes.



T SERIES

Upper attachment characterized by double joint mounted on self-lubricating bushings, with possibility to block the rotations by screws.



T SERIES

Available as **optional**: standard attachment and pins with customized measurements and skid-steer adapter.



TV SERIES

Standard on TV models: upper attachment with single pin without locks.



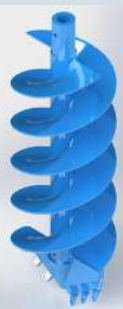
T/TV SERIES

Standard with 1.6mt hydraulic hoses.



1mt long Standard tip, available in 8 cuts: with diameter 100, 150, 200, 250, 300, 350, 400, 500.

Hexagon of 50mm or 70mm, depending on the model.



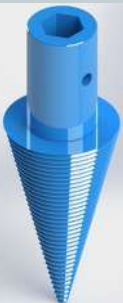
1mt long Rock tip, available in 8 cuts: with diameter 100, 150, 200, 250, 300, 350, 400, 500.

Hexagon of 50mm or 70mm, depending on the model.



Stump grinder, available in 3 cuts: with diameter 200, 300, 400.

Hexagon of 50mm or 70mm, depending on the model.

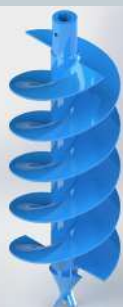


Conical tip, available in 3 cuts: with diameter 40, 170, 200 e 250.

Hexagon of 50mm or 70mm, depending on the model.

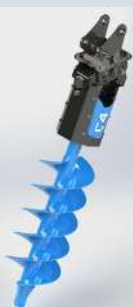


1mt extension with or without propeller, propeller diameter available in 8 measures : 100, 150, 200, 250, 300, 350, 400, 500.



T SERIES

Leaving the double joint free, the drill allows to maintain the perpendicularity with the ground, avoiding complicated maneuvers of positioning the arm. This is useful in applications with standard tip and rock tip.



With stump grinder and conical tip, the rotation blocks on the two pins help to precisely direct the tip and apply pressure on the wood without the auger being subjected to spontaneous movements. In addition, for special jobs where it is necessary to use the drill at unusual angles, three positions have been introduced for the upper pivot to tilt the auger forward or backward by about 25 degrees.

