



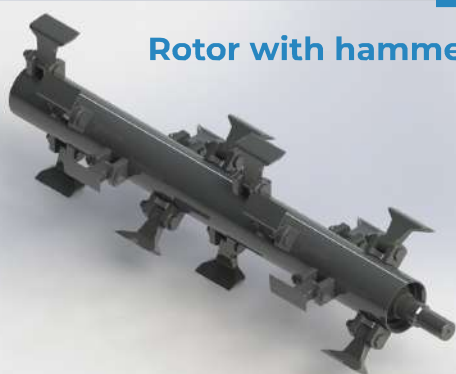
WWW.C4MECCANICA.IT



D / D-R SERIES

HYDRAULIC MULCHERS
FOR EXCAVATORS
FROM 5 TO 15 TONS

Rotor with hammers



Rotor with knives



D120/D120R
D140
D170

HYDRAULIC MULCHERS

D SERIES

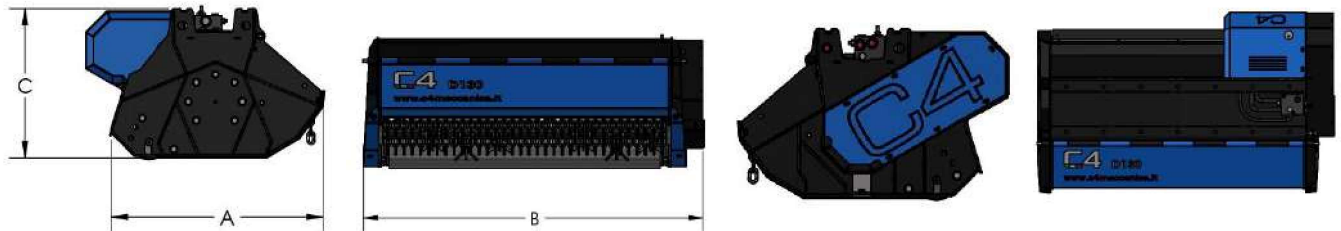
D120

D140

D170



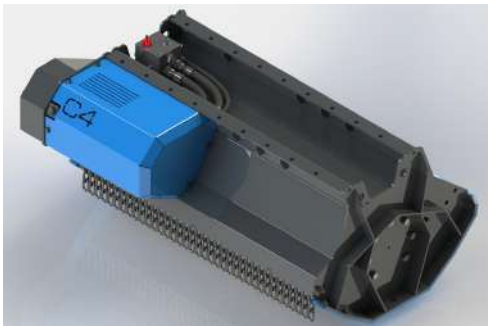
MODEL	D120	D140	D170
CUTTING WIDTH (mm)	1170	1370	1670
RECOMMENDED EXCAVATOR (ton)	8-10	9-12	10-15
WEIGHT (Kg)	470	525	575
OIL PRESSURE (bar)	230	230	230
OIL FLOW (l/min)	60-90	60-90	80-130
NUMBER OF KNIVES	36	48	48
NUMBER OF HAMMERS	12	16	16
MAX CUTTING DIAMETER (mm)	75	75	75
A DIMENSION (mm)	970	970	970
B DIMENSION (mm)	1395	1595	1895
C DIMENSION (mm)	600	600	600
SELF-LEVELLING SUPPORT WEIGHT (Kg)	85	85	85
EXCAVATOR ATTACHMENT WEIGHT (min-max Kg)	30-70	30-70	30-70



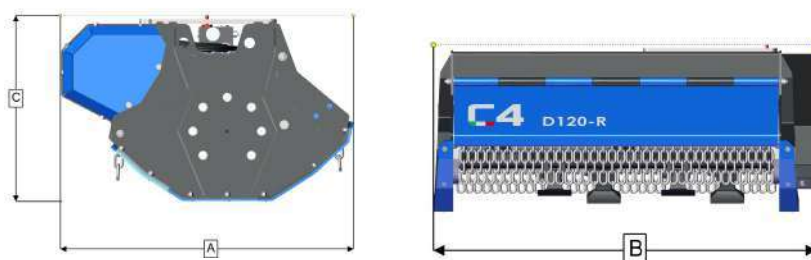
D-R SERIES

(Reversible - without support roller)

D120R



MODEL	D120R
CUTTING WIDTH (mm)	1170
RECOMMENDED EXCAVATOR (ton)	5-9
WEIGHT (Kg)	380
OIL PRESSURE (bar)	230
OIL FLOW (l/min)	70-110
NUMBER OF KNIVES	36
NUMBER OF HAMMERS	12
MAX CUTTING DIAMETER (mm)	60
A DIMENSION (mm)	942
B DIMENSION (mm)	1375
C DIMENSION (mm)	600
EXCAVATOR ATTACHMENT WEIGHT (min-max Kg)	30-70





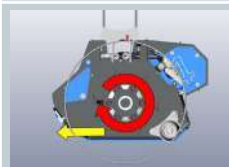
Predisposition of holes for the positioning of the attachment along the entire length of the mulcher.



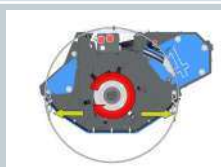
Fluidbox for complete and safe engine management, with maximum shockproof valve, anti-cavitation system and flow regulation to set the rotor speed correctly.



Available as **optional**: specific self-levelling support. (only for D series)



Shaft rotation clockwise. Unidirectional working direction. (D120/D140/D170)



Shaft rotation clockwise. Bidirectional working direction. (D120R)



Replaceable wear-resistant skids.



Double-bottomed case to increase robustness and optimize the cutting volume.



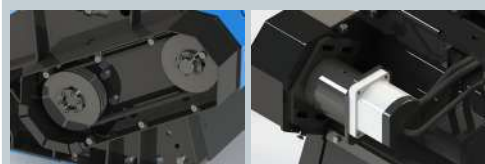
Available as **optional**: standard attachment and pins with customized measurements, flat plate for attachment as standard.



Standard with 2mt hydraulic hoses. Available as **optional**: set of hoses with customized lengths.



- Three-blade knife
- Hammer



Motor mounted on support with bearings to avoid premature wear of the engine, with casing for impact protection. Belt transmission, essential for applications where the transmitted powers begin increasing, thanks to the elastic joint that has the function to preserve both the motor and the rotor from unexpected stresses.



The machine is standard in a two-pipe configuration, the fluidbox will manage the flow of oil coming from engine drainage. In the event that the back pressure at the discharge is greater than 8 bar, it's possible to provide the third drainage tube for direct tank discharge.



Rotor can be equipped with three-blade knives for higher shredding capacity and lower demand of power. Rotor can be equipped with hammers to tackle branches and shrubs up to 75 mm in diameter (D Series), up to 50mm in diameter (D120R).



Rear support roller adjustable in three positions for cutting height adjustment. Rear protection with wear-resistant rubber strip. (D120/D140/D170). Protection with chains on both sides (on D120R).



Front protection with chains adjustable in two positions for easy maintenance.