



WWW.C4MECCANICA.IT



C / C-R SERIES

HYDRAULIC MULCHERS
FOR EXCAVATORS
FROM 3 TO 8 TONS

Rotor with hammers



Rotor with knives



**C100/C100R
C120**

HYDRAULIC MULCHERS

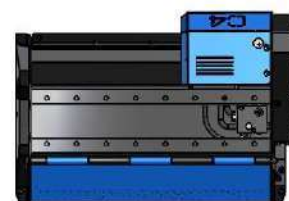
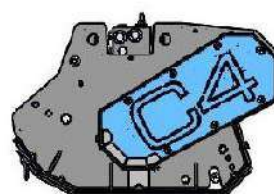
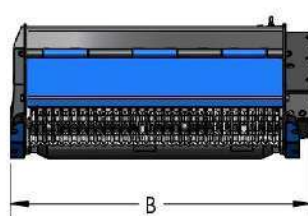
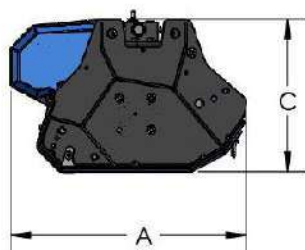
C SERIES

C100

C120



MODEL	C100	C120
CUTTING WIDTH (mm)	970	1170
RECOMMENDED EXCAVATOR (ton)	4-6.5	5-8
WEIGHT (Kg)	280	325
OIL PRESSURE (bar)	230	230
OIL FLOW (l/min)	40-80	40-80
NUMBER OF KNIVES	36	48
NUMBER OF HAMMERS	12	16
MAX CUTTING DIAMETER (mm)	60	60
A DIMENSION (mm)	785	785
B DIMENSION (mm)	1135	1335
C DIMENSION (mm)	500	500
SELF-LEVELLING SUPPORT WEIGHT (Kg)	43	43
EXCAVATOR ATTACHMENT WEIGHT (min-max Kg)	15-40	15-40



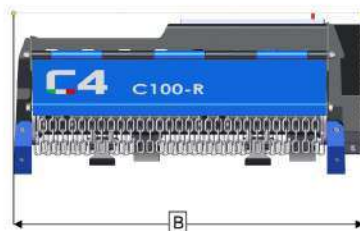
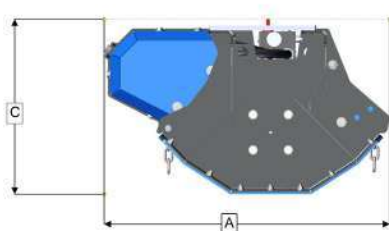
C-R SERIES

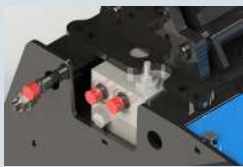
(Reversible - without support roller)

C100R



MODEL	C100R
CUTTING WIDTH (mm)	970
RECOMMENDED EXCAVATOR (ton)	3-6
WEIGHT (Kg)	230
OIL PRESSURE (bar)	230
OIL FLOW (l/min)	40-90
NUMBER OF KNIVES	36
NUMBER OF HAMMERS	12
MAX CUTTING DIAMETER (mm)	60
A DIMENSION (mm)	870
B DIMENSION (mm)	1150
C DIMENSION (mm)	530
EXCAVATOR ATTACHMENT WEIGHT (min-max Kg)	60





Fluidbox for complete and safe engine management, with maximum shockproof valve, anti-cavitation system and flow regulation to set the rotor speed correctly.



Predisposition of holes on the upper part of the machine, which allows to position customized attachment on 6 different positions (C100) or 8 different positions (C120).



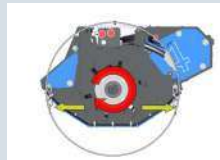
Replaceable wear-resistant skids.



Double-bottomed case to increase robustness and optimize the cutting volume.



Shaft rotation clockwise.
Unidirectional working direction.
(C100/C120)



Shaft rotation clockwise.
Bidirectional working direction.
(C100R)



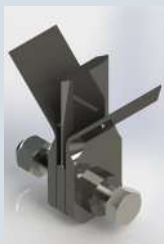
Standard with 2mt hydraulic hoses.
Available as **optional**: set of hoses with customized lengths.



Available as **optional**: standard attachment and pins with customized measurements, flat plate for attachment as standard.



Self-levelling support (**optional**), that allows an oscillation of the mulcher to accommodate the unevenness of the ground protecting it from bumps.
(only for C100/C120)



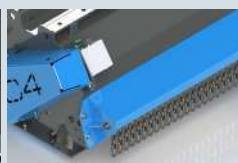
- Three-blade knife
- Hammer



Motor mounted on support with bearings to avoid premature wear of the engine, with casing for impact protection. Belt transmission, essential for applications where the transmitted powers begin increasing, thanks to the elastic joint that has the function to preserve both the motor and the rotor from unexpected stresses.



Rotor can be equipped with three-blade knives for higher shredding capacity and lower demand of power. Rotor can be equipped with hammers to tackle branches and shrubs up to 60 mm in diameter.



Rear support roller adjustable in three positions for cutting height adjustment. Rear protection with wear-resistant rubber strip on C100/C120. Protection with chains on both sides (on C100R)



The machine is standard in a two-pipe configuration, the fluidbox will manage the flow of oil coming from engine drainage. In the event that the back pressure at the discharge is greater than 8 bar, it's possible to provide the third drainage tube for direct tank discharge.



Front protection with chains adjustable in three positions for easy maintenance.