



# FSI H52

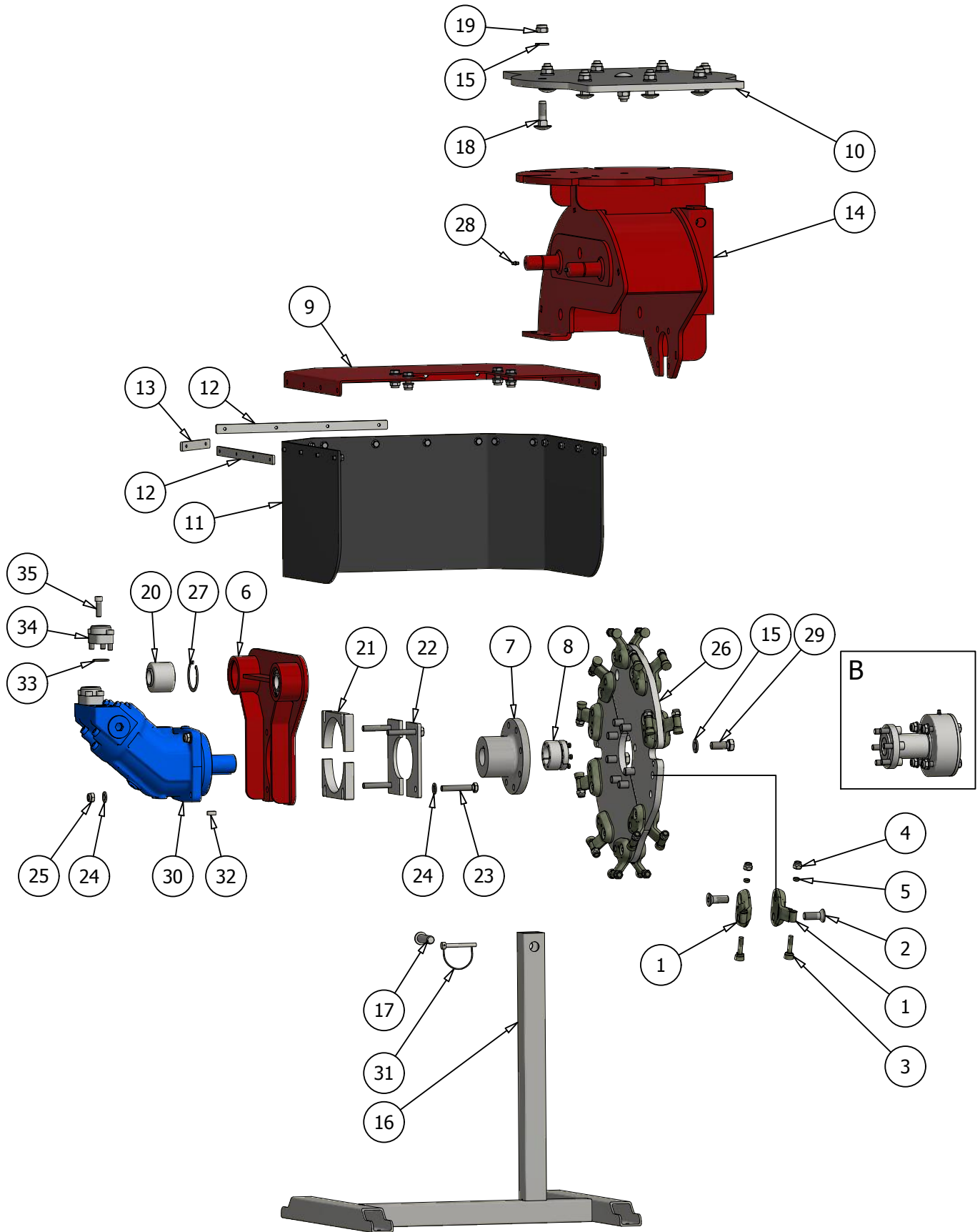
## Spare Parts List

For Product number:

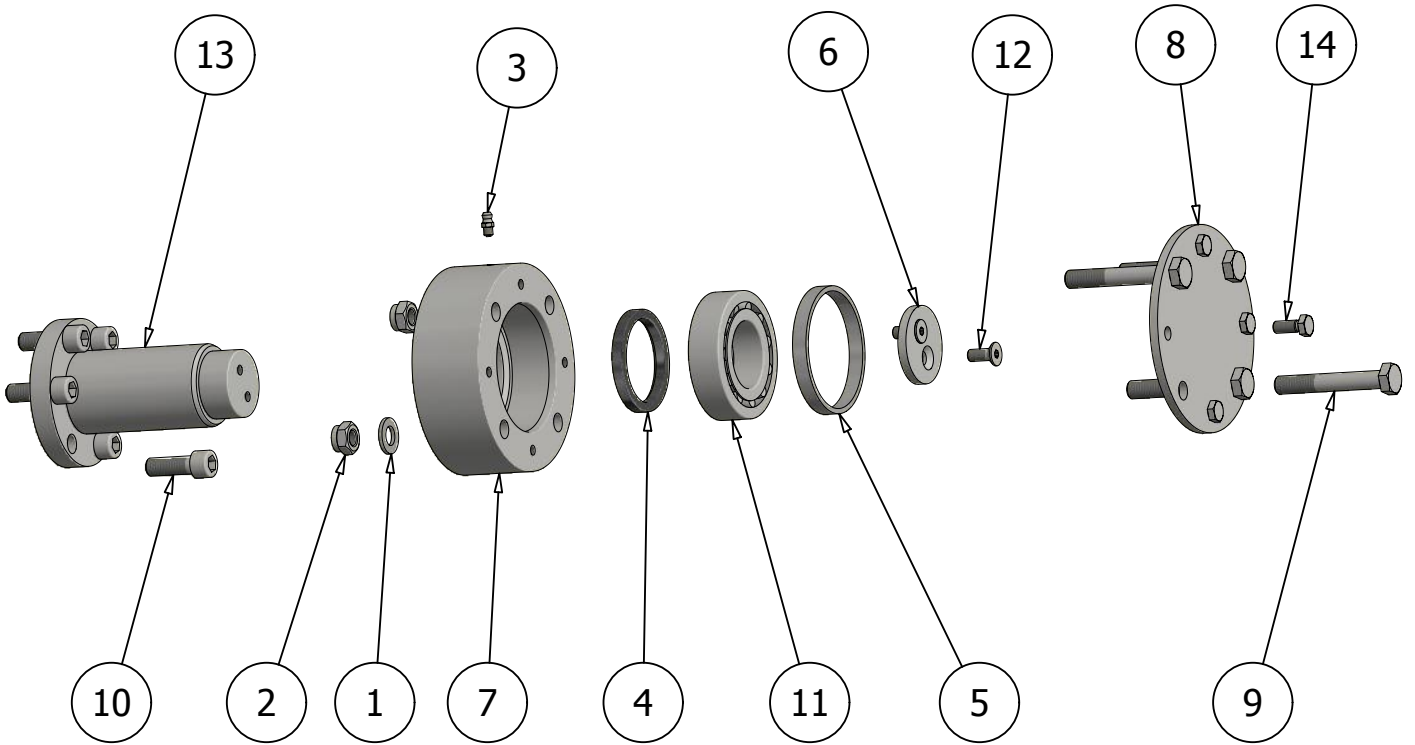
| A200010 |



Version 2.2, 01-2019, English



Pos.	Pcs.	Part no	Description
1	20	12454500	Holder cc45mm f. Tooth Ø24,5mm
2	20	12051016	Bolt L=51mm f. Holder Ø17-20-24,5mm
		12450000	Tooth Ø24,5mm w. Extra Nut (Pos 3, 4x2, 5)
3	20	12450000-T	Tooth Ø24,5mm
4	20	12450000-N	Nut f. Tooth Ø24,5mm
5	20	12450000-W	Washer f. Tooth Ø24,5mm
6	1	55501444	Bracket f. Motor H52
7	1	55501093	Hub f. 80cc
8	1	20050127	Clamping Element Cutter Wheel H52
9	1	55501101	Protection Steel Part H52
10	1	55501732	Unpainted Attachment H52
11	1	55501514	Protection Rubber H52
12	3	44122500	Mounting Strip 400mm - 4 Holes
13	2	55501110	Mounting Strip 135mm - 2 Holes
14	1	55501443	Cutter Housing H52
15	17	39163030	Washer M16
16	1	55501511	Stand H40/H52
17	1	37019070	Linkage Pin Ø19X76Mm
18	9	37016050	Carriage Bolt M16X50
19	9	38000216	Lock Nut M16
20	2	20031034	Rubber Damper Ø32/66
21	2	55501516	Cover Bracket 80cc Part 1
22	2	55501517	Cover Bracket 80cc Part 2
23	4	32512075	Bolt M12x75
24	20	39122425	Washer M12
25	12	38000212	Lock Nut M12
26	2	55500467	Cutter Wheel Set, H50
27	2	20070054	Snap Ring Internal Ø66
28	3	20030011	Grease Niple M6
29	8	32016040	Bolt M16X40
30	1	20022144	Rexroth 80cc
		20022110	Sealing Kit Rexroth H40S 80-110/H52
31	1	20030018	Lock Pin Ø8X60
32	1	55502751	Groove 12x8x18
33	2	60000791	O-ring f. 1"
34	2	20024124	Connection Flange 1" x 3/4" BSP M10
35	8	33010035	Bolt Insex M10x35



Pos.	Pcs.	Part No	Description
1	4	39122425	Washer M12
2	4	38000212	Lock Nut M12
3	1	20030011	Grease Nipple M6
4	1	20054009	Shaft Seal Ring 55X68X8
5	1	55501113	Ring f. Bearing Housing
6	1	55501115	Plate f. roller bearing
7	1	55501111	Bearing Housing
8	1	55501116	Cover f. Bearing Housing
9	4	32512080	Bolt M12x80
10	6	33012035	Bolt Insex M12x35
11	1	20040040	Spherical Roller Bearing
12	2	34008020	Bolt CS M8x20
13	1	55501521	Hub f. Cutter Wheel
14	4	32008020	Bolt M8x20