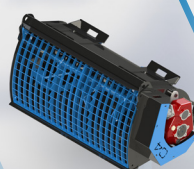
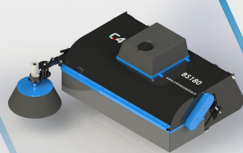
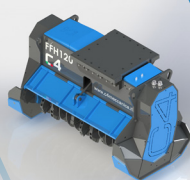




EQUIPMENT
FOR EARTHMOVING
MACHINERY AND
AGRICULTURAL MULCHERS

PRICE LIST 2025



INDEX

ATTACHMENTS WITH ADAPTERS	3
HYDRAULIC MULCHERS	
A SERIES	
hydraulic mulchers for excavators from 1.5 to 5 tons	4
A-R SERIES	
hydraulic mulchers for excavators from 1.5 to 5 tons - reversible without support roller	5
B SERIES	
hydraulic mulchers for excavators from 3 to 5 tons	6
B-R SERIES	
hydraulic mulchers for excavators from 3 to 5 tons - reversible without support roller	7
C SERIES	
hydraulic mulchers for excavators from 4 to 8 tons	8
C100R SERIES	
hydraulic mulchers for excavators from 3 to 6 tons - reversible without support roller	9
D SERIES	
hydraulic mulchers for excavators from 8 to 15 tons	10
D120R SERIES	
hydraulic mulchers for excavators from 5 to 9 tons - reversible without support roller	11
FORESTRY HYDRAULIC MULCHERS	
FL SERIES	
hydraulic mulchers with retractable hammers for excavators from 5 to 25 tons	12
F SERIES	
hydraulic mulchers with retractable hammers for excavators from 10 to 20 tons	13
FFL SERIES	
fixed teeth hydraulic mulcher for mini and midi excavators from 2.5 to 5 tons	14
FF / FF-L SERIES	
hydraulic mulchers with fixed teeth for excavators from 6 to 18 tons	15
FFH / FFH-L SERIES	
hydraulic mulchers with fixed teeth for excavators from 14 to 25 tons	16
HYDRAULIC MULCHERS FOR SKID-STEER LOADERS	
DM SERIES	17
DML SERIES	18
DMM SERIES	19
DMP SERIES	
hydraulic mulchers for compact track loaders and excavators from 3 to 5 tons	20
TF / TF-L SERIES	
hydraulic forestry mulchers with fixed teeth for skid steer loaders	21
HYDRAULIC AUGERS	
T / T-V SERIES	
multifunction hydraulic augers for excavators from 1.5 to 8 tons	22
MIXING BUCKETS	
BM / BM-H SERIES	
mixing buckets for skid steer loaders and excavators	24
SWEEPING BUCKETS	
BS / BS-H SERIES	
sweeping buckets with collection for skid steer loaders	25
MULTITOOL	
multifunction equipment for excavators from 1.8 to 3 ton	26
MA ADAPTER	
adapter for the use of agricultural equipment on skid-steer loader	27
SORTING GRAPPLE	
P SERIES	
sorting grapple with bidirectional hydraulic rotation as standard	28
PF SERIES	
fixed sorting grapple, without hydraulic rotation	28
HEDGE TRIMMERS	
TS SERIES	
hedge trimmers for excavators	29
MULCHERS FOR TRACTORS	
TAR SERIES	
reversible agricultural mulchers	30
TA-DT SERIES	
agricultural medium double PTO mulchers	31
TAP SERIES	
agricultural heavy-duty mulchers	32
TAP-R SERIES	
agricultural reversible heavy-duty mulchers	33
TALM SERIES	
agricultural medium lateral mulchers	34
TALP SERIES	
agricultural heavy duty lateral mulchers	35

ATTACHMENTS

WITH ADAPTERS

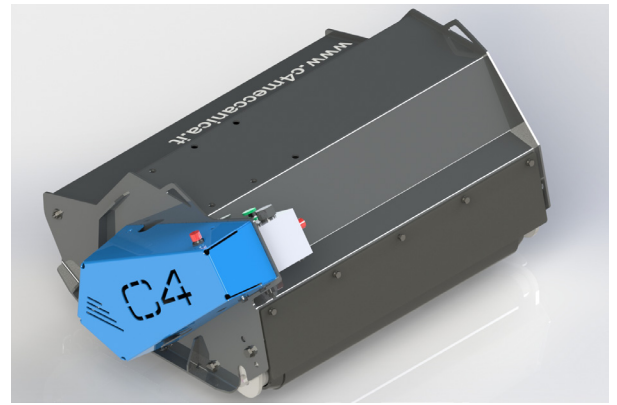
CODE	TYPE	PRICE
ATAR15	ATTACHMENT WITH AR15 0,6-1,8 tons	460,00 €
ATAR30	ATTACHMENT WITH AR30 1,8-2,5 tons	460,00 €
ATAR40	ATTACHMENT WITH AR40 2,5-4 tons	580,00 €
ATAR50	ATTACHMENT WITH AR50 4-6 tons	580,00 €
ATAR70	ATTACHMENT WITH AR70 6-7,5 tons	810,00 €
ATCR15	ATTACHMENT WITH CR15 0,6-1,8 tons	580,00 €
ATCR30	ATTACHMENT WITH CR30 1,8-2,5 tons	650,00 €
ATCR40	ATTACHMENT WITH CR40 2,5-4 tons	650,00 €
ATCR50	ATTACHMENT WITH CR50 4-6 tons	780,00 €
ATCR70	ATTACHMENT WITH CR70 6-12 tons	1.220,00 €
ATKC	ATTACHMENT WITH KLAC C 1-2 tons	700,00 €
ATKD	ATTACHMENT WITH KLAC D 2-3,5 tons	800,00 €
ATKE	ATTACHMENT WITH KLAC E 3,5-5,5 tons	960,00 €
ATKF	ATTACHMENT WITH KLAC F 5,5-8 tons	1.200,00 €

A SERIES

A60 / A80 / A90 / A100

HYDRAULIC MULCHERS FOR EXCAVATORS FROM 1.5 TO 5 TON

Rotor can be equipped with hammers or knives, according to the needs. External drainage can be set up at no extra cost.



MODEL	A60	A80	A90	A100
	2.650,00 €	2.850,00 €	3.050,00 €	3.250,00 €
CUTTING WIDTH (mm)	600	800	900	1060
RECOMMENDED EXCAVATOR (ton)	1.5-2.5	2-3	2.5-4	3.5-5
WEIGHT (Kg)	105	115	145	180
OIL PRESSURE (bar)	200	200	200	200
OIL FLOW (l/min)	20-50	20-50	30-80	30-80
NUMBER OF KNIVES	24	32	36	48
NUMBER OF HAMMERS	12	16	12	16
MAX CUTTING DIAMETER (mm)	20	20	35	35
SELF-LEVELLING SUPPORT WEIGHT (Kg)	27	27	27	27
EXCAVATOR ATTACHMENT WEIGHT (min-max Kg)	10-15	10-15	10-15	10-15

EQUIPPED WITH:

- Direct transmission with cast iron engine inside the machine protected from impacts and collisions.
- High pressure oil seal
- Fluidbox for complete and safe engine management, with maximum shockproof valve, anti-cavitation system and flow regulation
- Rear support roller adjustable in three positions
- Front protection with chains and rear protection with wear-resistant rubber strip.
- Flat plate for attachment
- 1,8 mt hydraulic hoses (A60/A80) and 2 mt hydraulic hoses (A90/A100)
- Labyrinth seal rotor bearing protection
- SKF rotor bearings

ACCESSORIES

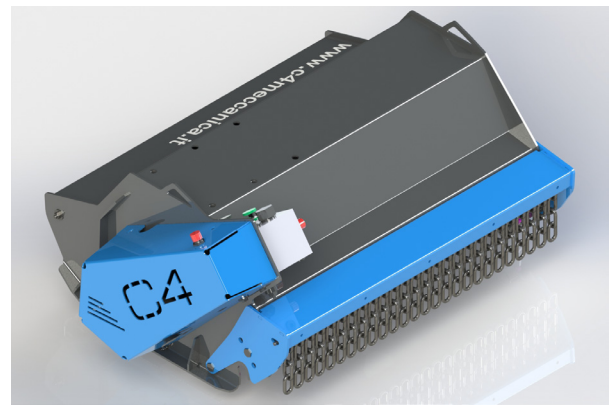
ATTACHMENT FROM 1.5 TO 3 TONS (weight 10-15kg)	ATS(A)	350,00 €
KIT OF PINS FOR ATTACHMENT	PATS(A)	100,00 €
ATTACHMENT FROM 3 TO 6 TONS (weight 10-15kg)	ATS(AB)	440,00 €
KIT OF PINS FOR ATTACHMENT	PATS(AB)	150,00 €
2MT HYDRAULIC HOSES	TIDR1	70,00 €
3MT HYDRAULIC HOSES	TIDR2	100,00 €
SELF-LEVELING SUPPORT (weight 27kg)	ATA(A)	380,00 €
REAR PROTECTION WITH CHAINS	PRCAT(A60)	320,00 €
	PRCAT(A80)	360,00 €
	PRCAT(A90)	380,00 €
	PRCAT(A100)	400,00 €
Possibility to exclude fluidbox (mulcher equipped only with anti-cavitation valve)	FLUB_A	-160,00 €

A-R SERIES

A60R / A80R / A90R / A100R

HYDRAULIC MULCHERS FOR EXCAVATORS
FROM 1.5 TO 5 TONS - (Reversible - without support roller)

Rotor can be equipped with hammers or knives, according to the needs. External drainage can be set up at no extra cost.



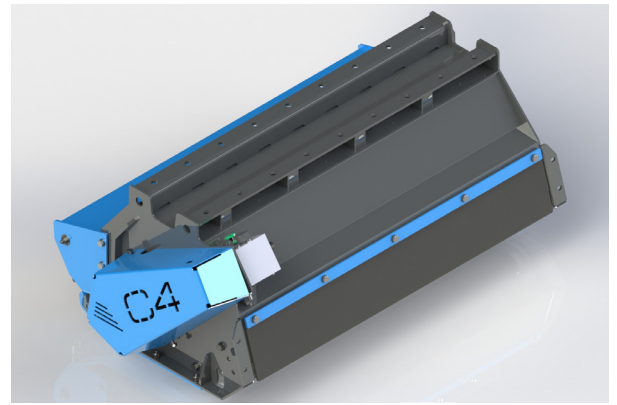
MODEL	A60R	A80R	A90R	A100R
	2.500,00 €	2.700,00 €	2.900,00 €	3.100,00 €
CUTTING WIDTH (mm)	600	800	900	1060
RECOMMENDED EXCAVATOR (ton)	1.5-2.5	2-3	2.5-4	3.5-5
WEIGHT (Kg)	105	115	145	180
OIL PRESSURE (bar)	200	200	200	200
OIL FLOW (l/min)	20-50	20-50	30-80	30-80
NUMBER OF KNIVES	24	32	36	48
NUMBER OF HAMMERS	12	16	12	16
MAX CUTTING DIAMETER (mm)	20	20	35	35
SELF-LEVELLING SUPPORT WEIGHT (Kg)	27	27	27	27
EXCAVATOR ATTACHMENT WEIGHT (min-max Kg)	10-15	10-15	10-15	10-15
EQUIPPED WITH:				
<ul style="list-style-type: none"> - Direct transmission with cast iron engine inside the machine protected from impacts and collisions. - High pressure oil seal - Fluidbox for complete and safe engine management, with maximum shockproof valve, anti-cavitation system and flow regulation - Rear protection with chains - Flat plate for attachment - 1,8 mt hydraulic hoses (A60R/A80R) and 2 mt hydraulic hoses (A90R/A100R) - Labyrinth seal rotor bearing protection - SKF rotor bearings 				
ACCESSORIES				
ATTACHMENT FROM 1.5 TO 3 TONS (weight 10-15kg)	ATS(A)		350,00 €	
KIT OF PINS FOR ATTACHMENT	PATS(A)		100,00 €	
ATTACHMENT FROM 3 TO 6 TONS (weight 10-15kg)	ATS(AB)		440,00 €	
KIT OF PINS FOR ATTACHMENT	PATS(AB)		150,00 €	
2MT HYDRAULIC HOSES	TIDR1		70,00 €	
3MT HYDRAULIC HOSES	TIDR2		100,00 €	
SELF-LEVELING SUPPORT (weight 27kg)	ATA(A)		380,00 €	
SUPPORT ROLLER	RAPP_A60R		320,00 €	
	RAPP_A80R		340,00 €	
	RAPP_A90R		370,00 €	
	RAPP_A100R		400,00 €	
Possibility to exclude fluidbox (mulcher equipped only with anti-cavitation valve)	FLUB_A		-160,00 €	

B SERIES

B90 / B110

HYDRAULIC MULCHERS FOR EXCAVATORS FROM 3 TO 5 TONS

Rotor can be equipped with hammers or knives, according to the needs. External drainage can be set up at no extra cost.



MODEL	B90	B110
	4.100,00 €	4.500,00 €
CUTTING WIDTH (mm)	890	1070
RECOMMENDED EXCAVATOR (ton)	3-4	3.5-5
WEIGHT (Kg)	205	235
OIL PRESSURE (bar)	200	200
OIL FLOW (l/min)	30-80	40-80
NUMBER OF KNIVES	36	48
NUMBER OF HAMMERS	12	16
MAX CUTTING DIAMETER (mm)	50	50
SELF-LEVELLING SUPPORT WEIGHT (Kg)	31	31
EXCAVATOR ATTACHMENT WEIGHT (min-max Kg)	12-20	12-20

EQUIPPED WITH:

- Direct transmission with cast iron engine inside the machine protected from impacts and collisions.
- High pressure oil seal
- Fluidbox for complete and safe engine management, with maximum shockproof valve, anti-cavitation system and flow regulation
- Front protection with chains. Rear protection with wear-resistant rubber strip.
- Double-bottomed case
- Flat plate for attachment
- 2mt hydraulic hoses
- Labyrinth seal rotor bearing protection
- Self-aligning SKF rotor bearings
- Replaceable wear-resistant skids.
- Predisposition of the attachment on 7 different positions.

ACCESSORIES

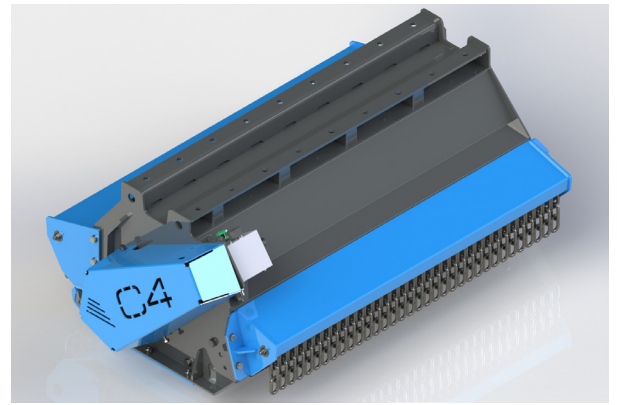
ATTACHMENT FROM 3 TO 6 TONS (weight 12-20kg)	ATS(AB)	440,00 €
KIT OF PINS FOR ATTACHMENT	PATS(AB)	150,00 €
3MT HYDRAULIC HOSES	TIDR2	100,00 €
SELF-LEVELING SUPPORT (weight 31kg)	ATA(B)	400,00 €
REAR PROTECTION WITH CHAINS	PRCAT(B90)	380,00 €
	PRCAT(B110)	400,00 €

B-R SERIES

B90R / B110R

HYDRAULIC MULCHERS FOR EXCAVATORS
FROM 3 TO 5 TONS - (Reversible - without support roller)

Rotor can be equipped with hammers or knives, according to the needs. External drainage can be set up at no extra cost.



MODEL	B90R	B110R
	3.700,00 €	4.050,00 €
CUTTING WIDTH (mm)	890	1070
RECOMMENDED EXCAVATOR (ton)	3-4	3.5-5
WEIGHT (Kg)	205	235
OIL PRESSURE (bar)	200	200
OIL FLOW (l/min)	30-80	40-80
NUMBER OF KNIVES	36	48
NUMBER OF HAMMERS	12	16
MAX CUTTING DIAMETER (mm)	50	50
SELF-LEVELLING SUPPORT WEIGHT (Kg)	31	31
EXCAVATOR ATTACHMENT WEIGHT (min-max Kg)	12-20	12-20

EQUIPPED WITH:

- Direct transmission with cast iron engine inside the machine protected from impacts and collisions.
- High pressure oil seal
- Fluidbox for complete and safe engine management, with maximum shockproof valve, anti-cavitation system and flow regulation
- Front and rear protection with chains
- Double-bottomed case
- Flat plate for attachment
- 2mt hydraulic hoses
- Labyrinth seal rotor bearing protection
- Self-aligning SKF rotor bearings
- Replaceable wear-resistant skids.
- Predisposition of the attachment on 7 different positions.

ACCESSORIES

ATTACHMENT FROM 3 TO 6 TONS (weight 12-20kg)	ATS(AB)	440,00 €
KIT OF PINS FOR ATTACHMENT	PATS(AB)	150,00 €
3MT HYDRAULIC HOSES	TIDR2	100,00 €
SELF-LEVELING SUPPORT (weight 31kg)	ATA(B)	400,00 €
SUPPORT ROLLER	RAPP_B90R	400,00 €
	RAPP_B110R	450,00 €

C SERIES

C100 / C120

HYDRAULIC MULCHERS FOR EXCAVATORS FROM 4 TO 5 TONS

Rotor can be equipped with hammers or knives, according to the needs. External drainage can be set up at no extra cost.



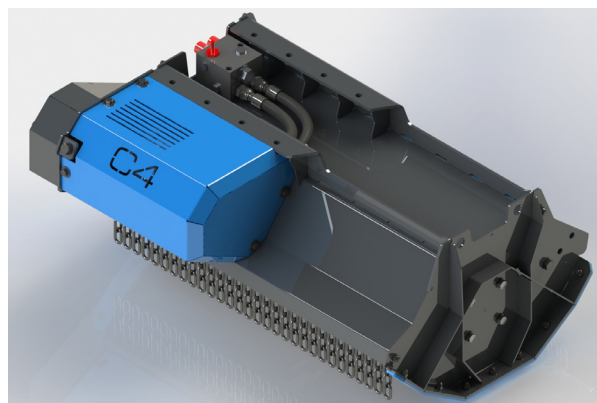
MODEL	C100	C120
	5.700,00 €	5.900,00 €
CUTTING WIDTH (mm)	970	1170
RECOMMENDED EXCAVATOR (ton)	4-6.5	5-8
WEIGHT (Kg)	280	325
OIL PRESSURE (bar)	230	230
OIL FLOW (l/min)	40-80	40-80
NUMBER OF KNIVES	36	48
NUMBER OF HAMMERS	12	16
MAX CUTTING DIAMETER (mm)	60	60
SELF-LEVELLING SUPPORT WEIGHT (Kg)	31	31
EXCAVATOR ATTACHMENT WEIGHT (min-max Kg)	15-40	15-40
EQUIPPED WITH:		
<ul style="list-style-type: none"> - Fluidbox for complete and safe engine management, with maximum shockproof valve, anti-cavitation system and flow regulation - Rear protection with support roller and anti-wear strip - Double-bottomed case - Flat plate for attachment - 2mt hydraulic hoses - Labyrinth seal rotor bearing protection - SKF rotor bearings - Replaceable wear-resistant skids - Predisposition of the attachment on 6 or 8 different positions. - Motor mounted on support with bearings and belt transmission - Front protection with chains adjustable in three positions for easy maintenance 		
ACCESSORIES		
ATTACHMENT FROM 4 TO 8 TONS (weight 15-40kg)	ATS(C)	500,00 €
KIT OF PINS FOR ATTACHMENT	PATS(C)	180,00 €
3 MT HYDRAULIC HOSES	TIDR2	100,00 €
SELF-LEVELING SUPPORT (weight 31kg)	ATA(C)	500,00 €

C100R SERIES

C100R

HYDRAULIC MULCHERS FOR EXCAVATORS
FROM 3 TO 6 TONS - (Reversible - without support roller)

Rotor can be equipped with hammers or knives, according to the needs. External drainage can be set up at no extra cost.



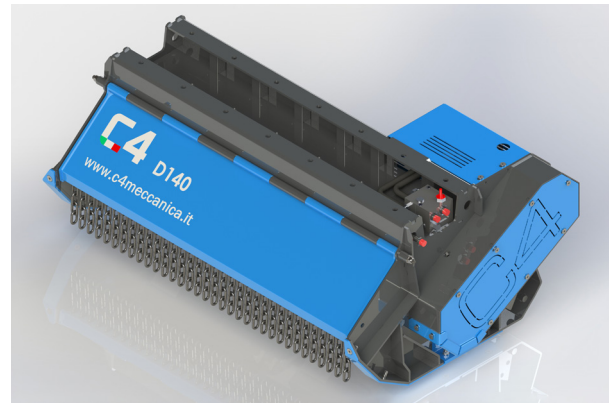
MODEL	C100R	
	4.800,00 €	
CUTTING WIDTH (mm)	970	
RECOMMENDED EXCAVATOR (ton)	3-6	
WEIGHT (Kg)	230	
OIL PRESSURE (bar)	230	
OIL FLOW (l/min)	40-90	
NUMBER OF KNIVES	36	
NUMBER OF HAMMERS	12	
MAX CUTTING DIAMETER (mm)	60	
EXCAVATOR ATTACHMENT WEIGHT (min-max Kg)	15-40	
EQUIPPED WITH:		
<ul style="list-style-type: none">- Fluidbox for complete and safe engine management, with maximum shockproof valve, anti-cavitation system and flow regulation- Rear protection with chains- Double-bottomed case- Flat plate for attachment- 2mt hydraulic hoses- Labyrinth seal rotor bearing protection- SKF rotor bearings- Replaceable wear-resistant skids- Motor mounted on support with bearings and belt transmission- Front protection with chains adjustable in three positions for easy maintenance		
ACCESSORIES		
ATTACHMENT FROM 3 TO 6 TONS (weight 15-40kg)	ATS(C)	500,00 €
KIT OF PINS FOR ATTACHMENT	PATS(C)	180,00 €
3 MT HYDRAULIC HOSES	TIDR2	100,00 €

D SERIES

D120 / D140 / D170

HYDRAULIC MULCHERS FOR EXCAVATORS FROM 8 TO 15 TONS

Rotor can be equipped with hammers or knives, according to the needs. External drainage can be set up at no extra cost.



MODEL	D120	D140	D170
	7.300,00 €	7.800,00 €	9.600,00 €
CUTTING WIDTH (mm)	1170	1370	1670
RECOMMENDED EXCAVATOR (ton)	8-10	9-12	10-15
WEIGHT (Kg)	470	525	575
OIL PRESSURE (bar)	230	230	230
OIL FLOW (l/min)	60-90	60-90	80-130
NUMBER OF KNIVES	36	48	48
NUMBER OF HAMMERS	12	16	16
MAX CUTTING DIAMETER (mm)	75	75	75
SELF-LEVELLING SUPPORT WEIGHT (Kg)	85	85	85
EXCAVATOR ATTACHMENT WEIGHT (min-max Kg)	30-70	30-70	30-70

EQUIPPED WITH:

- Fluidbox for complete and safe engine management, with maximum shockproof valve, anti-cavitation system and flow regulation
- Rear support roller adjustable in three positions for cutting height adjustment
- Double-bottomed case
- Flat plate for attachment
- 2mt hydraulic hoses
- Labyrinth seal rotor bearing protection
- SKF rotor bearings
- Replaceable wear-resistant skids
- Predisposition of holes for the positioning of the attachment along the entire length of the mulcher
- Motor mounted on support with bearings to avoid premature wear of the engine, with casing for impact protection
- Front protection with chains adjustable in two positions for easy maintenance

ACCESSORIES

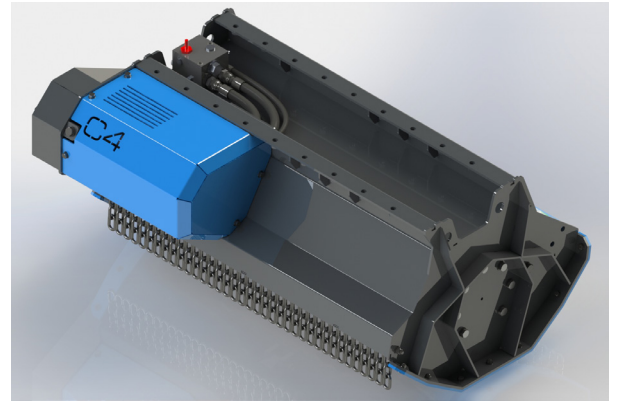
ATTACHMENT FROM 6 TO 10 TONS (weight 30-70kg)	ATS(D)	850,00 €
KIT OF PINS FOR ATTACHMENT	PATS(D)	190,00 €
ATTACHMENT FROM 10 TO 20 TONS (weight 30-70kg)	ATS(D170)	1.100,00 €
KIT OF PINS FOR ATTACHMENT	PATS(D170)	250,00 €
3 MT HYDRAULIC HOSES	TIDR2	100,00 €
SELF-LEVELING SUPPORT (weight 85kg)	ATA(D)	1.000,00 €

D120R SERIES

D120R

HYDRAULIC MULCHERS FOR EXCAVATORS
FROM 5 TO 9 TONS - (Reversible - without support roller)

Rotor can be equipped with hammers or knives, according to the needs. External drainage can be set up at no extra cost.



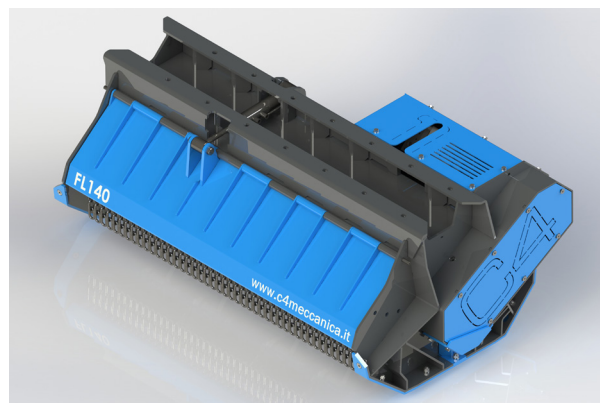
MODEL	D120R	
	6.200,00 €	
CUTTING WIDTH (mm)	1170	
RECOMMENDED EXCAVATOR (ton)	5-9	
WEIGHT (Kg)	380	
OIL PRESSURE (bar)	230	
OIL FLOW (l/min)	70-110	
NUMBER OF KNIVES	36	
NUMBER OF HAMMERS	12	
MAX CUTTING DIAMETER (mm)	60	
EXCAVATOR ATTACHMENT WEIGHT (min-max Kg)	30-70	
EQUIPPED WITH:		
<ul style="list-style-type: none">- Fluidbox for complete and safe engine management, with maximum shockproof valve, anti-cavitation system and flow regulation- Double-bottomed case- Flat plate for attachment- 2mt hydraulic hoses- Labyrinth seal rotor bearing protection- SKF rotor bearings- Replaceable wear-resistant skids- Predisposition of holes for the positioning of the attachment along the entire length of the mulcher- Motor mounted on support with bearings to avoid premature wear of the engine, with casing for impact protection- Front protection with chains adjustable in two positions for easy maintenance- Rear protection with chains		
ACCESSORIES		
ATTACHMENT FROM 6 TO 10 TONS (weight 15-40kg)	ATS(D)	850,00 €
KIT OF PINS FOR ATTACHMENT	PATS(D)	190,00 €
3 MT HYDRAULIC HOSES	TIDR2	100,00 €

FL SERIES

FL100 / FL110 / FL140

FL170 / FL230

HYDRAULIC MULCHERS WITH RETRACTABLE
HAMMERS FOR EXCAVATORS **FROM 5 TO 25 TONS**



MODEL	FL100	FL110	FL140	FL170	FL230
	10.300,00 €	10.800,00 €	12.400,00 €	14.000,00 €	25.400,00 €
CUTTING WIDTH (mm)	1020	1090	1467	1755	2324
RECOMMENDED EXCAVATOR (ton)	5-8	6-9	9-15	12-18	18-25
WEIGHT (Kg)	360	450	750	820	1470
OIL PRESSURE (bar)	250	250	250	250	250
OIL FLOW (l/min)	40-70	60-80	90-140	120-180	140-200
NUMBER OF HAMMERS	16	16	24	24	32
MAX CUTTING DIAMETER (mm)	100	100	100	100	100
EXCAVATOR ATTACHMENT WEIGHT (min-max Kg)	30-60	30-60	50-100	60-120	130-170

EQUIPPED WITH:

- Fluidbox for complete and safe engine management, with maximum shockproof valve, anti-cavitation system and flow regulation
- Front protection with chains, adjustable on 4 positions
- Double-bottomed case in hardox to increase robustness
- Flat plate for attachment
- 3mt hydraulic hoses
- Labyrinth seal rotor bearing protection
- SKF rotor bearings
- Replaceable wear-resistant skids.
- Predisposition of holes for the positioning of the attachment along the entire length of the mulcher
- Piston motor with external drain as standard, protected by casing and belt transmission
- Rear protection with chains
- Rotor with retractable hammers

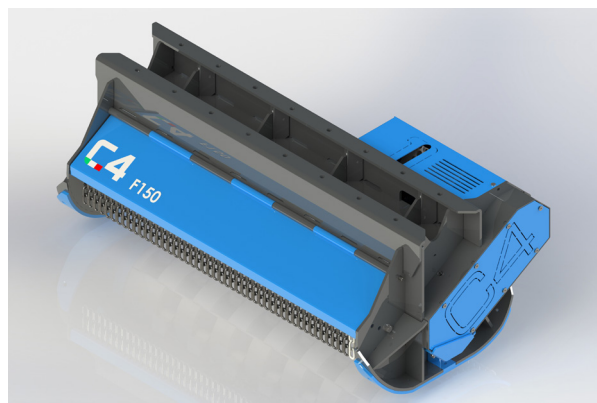
ACCESSORIES

ATTACHMENT FROM 6 TO 10 TONS (weight 30-60kg)	ATSFL(1)	850,00 €
KIT OF PINS FOR ATTACHMENT	PATSFL(1)	190,00 €
ATTACHMENT FROM 10 TO 20 TONS (weight 30-60kg)	ATSFL(2)	1.100,00 €
KIT OF PINS FOR ATTACHMENT	PATSFL(2)	250,00 €
ATTACHMENT FROM 18 TO 25 TONS (weight 30-60kg)	ATSFL(3)	1.400,00 €
KIT OF PINS FOR ATTACHMENT	PATSFL(3)	330,00 €
HYDRAULICALLY ADJUSTABLE FRONT DOOR	PRI	300,00 €
SUPPORT ROLLER	RAPP_FL100	900,00 €
	RAPP_FL110	980,00 €
	RAPP_FL140	1.150,00 €
MECHANICAL VARIABLE DISPLACEMENT PISTON ENGINE	MTIPVM	1.500,00 €
SOLENOID VALVE FOR HYDRAULIC JACK - with main line	ELETPP	1.100,00 €

F SERIES

F110 / F150

HYDRAULIC MULCHERS WITH RETRACTABLE HAMMERS FOR EXCAVATORS **FROM 10 TO 20 TONS**



MODEL	F110	F150
	15.200,00 €	17.300,00 €
CUTTING WIDTH (mm)	1165	1554
RECOMMENDED EXCAVATOR (ton)	10-15	12-20
WEIGHT (Kg)	660	880
OIL PRESSURE (bar)	250	250
OIL FLOW (l/min)	80-130	100-150
NUMBER OF HAMMERS	20	28
NUMBER OF PINS	4	4
MAX CUTTING DIAMETER (mm)	200	200
EXCAVATOR ATTACHMENT WEIGHT (min-max Kg)	50-100	60-120

EQUIPPED WITH:

- Engine with anti-cavitation valve
- Double-bottomed case with internal wear-resistant lining in Hardox.
- 3mt hydraulic hoses
- Labyrinth seal rotor bearing protection
- SKF rotor bearings
- Replaceable wear-resistant skids.
- Piston motor with external drain as standard, protected by casing and belt transmission
- Rear protection with chains
- Closed rotor with retractable hammers,
- Flat plate for attachment

ACCESSORIES

ATTACHMENT FROM 6 TO 10 TONS (weight 50-100kg)	ATSF(1)	1.000,00 €
KIT OF PINS FOR ATTACHMENT	PATSF(1)	250,00 €
ATTACHMENT FROM 10 TO 20 TONS (weight 50-100kg)	ATSF(2)	1.500,00 €
KIT OF PINS FOR ATTACHMENT	PATSF(2)	330,00 €
HYDRAULICALLY ADJUSTABLE FRONT DOOR	PRI	300,00 €

FFL SERIES

FFL55 / FFL75

FIXED TEETH HYDRAULIC MULCHERS FOR MINI
AND MIDI EXCAVATORS **FROM 2.5 TO 5 TONS**



MODEL	FFL55	FFL75
	7.100,00 €	7.400,00 €
CUTTING WIDTH (mm)	560	760
RECOMMENDED EXCAVATOR (ton)	2,5-4	3-5
WEIGHT (Kg)	170	200
OIL PRESSURE (bar)	250	250
OIL FLOW (lt/min)	30-90	40-90
NUMBER OF TOOLS	12	16
MAX CUTTING DIAMETER (mm)	100	100
EXCAVATOR ATTACHMENT WEIGHT (min-max Kg)	12-30	12-30

EQUIPPED WITH:

- Fluidbox with anti-cavitation valve
- Double-bottomed case in hardox to increase robustness
- 2mt hydraulic hoses
- Predisposition of holes for customized positioning of the attachment
- Flat plate for attachment
- Replaceable wear-resistant skids.
- Fixed teeth rotor with interchangeable tools
- Cutting depth reducer
- GR2 gear motor with direct drive
- Labyrinth seal rotor bearing protection
- SKF rotor bearings

ACCESSORIES

ATTACHMENT FROM 2,5 TO 5 TONS	ATSFFL	350,00 €
KIT OF PINS FOR ATTACHMENT	PATSFFL	100,00 €
3MT HYDRAULIC HOSES	TIDR2	100,00€
GR3 GEAR MOTOR	MT_IN3	500,00€
PISTON ENGINE	MTIP_FFL	950,00€

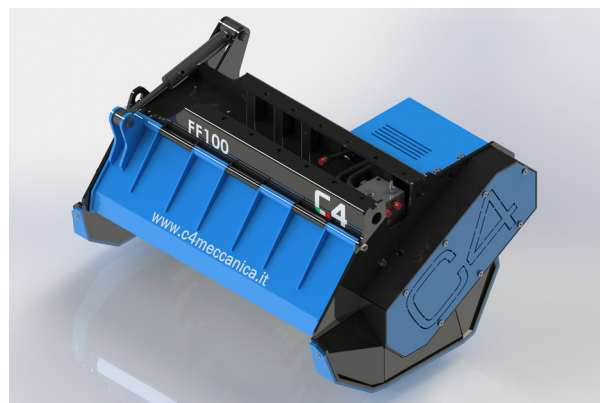
FF / FF-L SERIES

FF80 / FF100 / FF130

FF80L / FF100L / FF130L

HYDRAULIC MULCHERS WITH FIXED TEETH FOR EXCAVATORS **FROM 6 TO 18 TONS**

FF-L series with cutting depth reducer.



MODEL	FF80	FF100	FF130
	10.900,00 €	12.500,00 €	17.600,00 €
MODEL (with cutting depth reducer)	FF80L	FF100L	FF130L
	11.850,00 €	13.700,00 €	19.200,00 €
CUTTING WIDTH (mm)	800	1000	1300
RECOMMENDED EXCAVATOR (ton)	6-10	8-12	12-18
FF WEIGHT (fixed teeth model)	400	470	860
FF-L WEIGHT (mod. with cutting depth reducer)	422	496	886
OIL PRESSURE (bar)	250	250	250
OIL FLOW (l/min)	60-80	60-80	100-150
NUMBER OF TOOLS	20	24	26
MAX CUTTING DIAMETER (mm)	150	150	250
EXCAVATOR ATTACHMENT WEIGHT (min-max Kg)	15-40	15-40	70-110

EQUIPPED WITH:

- Front protection with hydraulically adjustable front door, rear protection with chains.
- Double-bottomed case with internal wearresistant lining in Hardox.
- 3mt hydraulic hoses.
- Replaceable antiwear support skids.
- Predisposition of holes for a customized positioning of the attachment.
- Flat plate for attachment.
- Fixed teeth rotor with interchangeable tools
- Piston motor with external drain as standard, protected by casing and belt transmission.
- Fluidbox with maximum shockproof valve, anticavitation system and flow regulation
- Cutting depth reducer on FF-L series
- Labyrinth seal rotor bearing protection
- SKF rotor bearings

ACCESSORIES

ATTACHMENT FROM 6 TO 10 TONS (weight 50-100kg)	ATSFF(1)	1.000,00 €
KIT OF PINS FOR ATTACHMENT	PATSFF(1)	250,00 €
ATTACHMENT FROM 10 TO 20 TONS (weight 50-100kg)	ATSFF(2)	1.400,00 €
KIT OF PINS FOR ATTACHMENT	PATSFF(2)	330,00 €
MECHANICAL VARIABLE DISPLACEMENT PISTON ENGINE	MTIPVM	1.500,00 €
SOLENOID VALVE FOR HYDRAULIC JACK - with main line	ELETPP	1.100,00 €

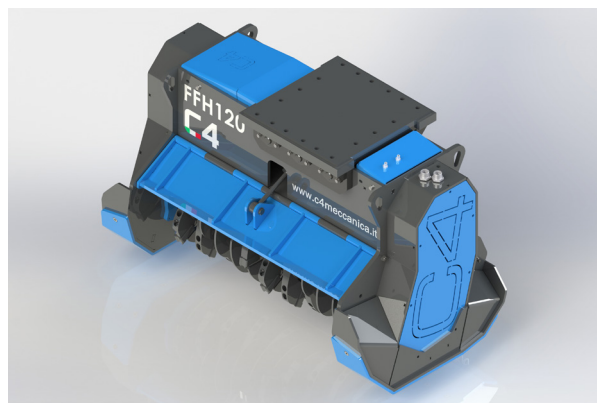
FFH / FFH-L SERIES

FFH120 / FFH150

FFH120L / FFH150L

HYDRAULIC MULCHERS WITH FIXED TEETH
FOR EXCAVATORS **FROM 14 TO 25 TONS**

FFH-L Series with cutting depth reducer.



MODEL	FFH120	FFH150
	25.700,00 €	29.000,00 €
MODEL (with cutting depth reducer)	FFH120L	FFH150L
	27.700,00 €	31.500,00 €
CUTTING WIDTH (mm)	1200	1500
RECOMMENDED EXCAVATOR (ton)	14-20	16-25
FFH WEIGHT (fixed teeth model)	1200	1400
FFH-L WEIGHT (mod. with cutting depth reducer)	1250	1470
OIL PRESSURE (bar)	350	350
OIL FLOW (l/min)	130-200	130-200
NUMBER OF TOOLS	24	30
MAX CUTTING DIAMETER (mm)	250	250
EXCAVATOR ATTACHMENT WEIGHT (min-max Kg)	140-180	140-180

EQUIPPED WITH:

- Front protection with hydraulically adjustable door
- Double-bottomed case with internal wear-resistant lining in Hardox.
- 3m hydraulic hoses
- Replaceable anti-wear skids
- Fixed teeth rotor with
- Fixed teeth rotor with interchangeable tools
- Variable displacement piston engine
- Fluidbox with anticavitation valve.
- Back protection with double set of chains.
- Cutting depth reducer on FFH-L series
- Labyrinth seal rotor bearing protection
- SKF rotor bearings

ACCESSORIES

ATTACCHMENT	ATS(FFH)	1.800,00 €
KIT OF PINS FOR ATTACHMENT	PATS(FFH)	350,00 €
SOLENOID VALVE FOR HYDRAULIC - with main line	ELETPP	1.100,00 €

DM SERIES

DM160 / DM190 / DM220

HYDRAULIC MULCHERS FOR SKID STEER LOADERS

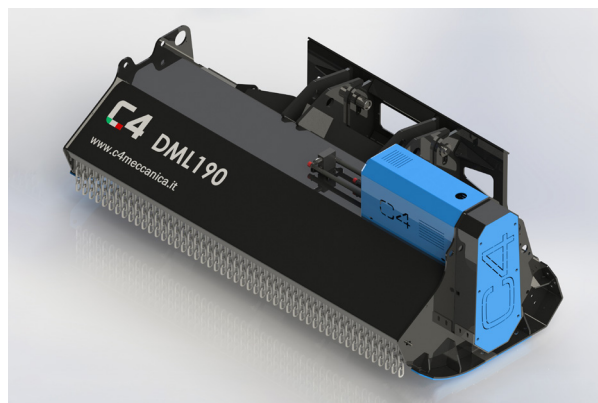


MODEL	DM160	DM190	DM220
	11.800,00 €	12.500,00 €	13.700,00 €
CUTTING WIDTH (mm)	1590	1890	2190
WEIGHT (Kg)	810	860	910
OIL PRESSURE (bar)	220	220	220
OIL FLOW (l/min)	70-100	90-120	100-140
NUMBER OF HAMMERS	16	24	28
NUMBER OF KNIVES	48	72	84
MAX CUTTING DIAMETER (mm)	70	70	70
EQUIPPED WITH:			
<ul style="list-style-type: none"> - Motor with anti-cavitation valve - Double bottom case - Front protection with chains. - 3mt hydraulic hoses - Standard with skid-steer attachment - Hydraulic gear motor - Hitch with hydraulic translation - Rear protection with adjustable support roller - Oscillating attachment system - Labyrinth seal rotor bearing protection - SKF rotor bearings 			
ACCESSORIES			
PISTON ENGINE	MTIP_DM	1.100,00 €	
SOLENOID VALVE FOR TRANSLATION ACTIVATION	ELETT_DM	550,00 €	
ATTACHMENT WITH ROTATION	ATROT	670,00 €	
CUSTOMIZED ATTACHMENT	ATPER	800,00 €	

DML SERIES

DML160 / DML190 / DML220

HYDRAULIC MULCHERS FOR SKID STEER LOADERS



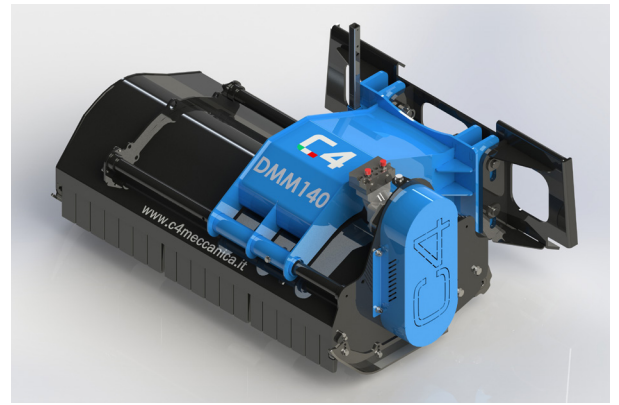
MODEL	DML160	DML190	DML220
	9.400,00 €	9.800,00 €	10.500,00 €
CUTTING WIDTH (mm)	1590	1890	2190
WEIGHT (Kg)	565	610	660
OIL PRESSURE (bar)	220	220	220
OIL FLOW (l/min)	70-100	90-120	100-140
NUMBER OF HAMMERS	16	24	28
NUMBER OF KNIVES	48	72	84
MAX CUTTING DIAMETER (mm)	70	70	70
EQUIPPED WITH:			
<ul style="list-style-type: none"> - Motor with anti-cavitation valve - Double bottom case - Front protection with chains. - Hydraulic gear motor - Simplified oscillating attachment system with slotted pins - Rear protection with adjustable support roller - Standard with skid-steer attachment - Labyrinth seal rotor bearing protection - SKF rotor bearings 			
ACCESSORIES			
PISTON ENGINE	MTIP_DML	1.100,00 €	
CUSTOMIZED ATTACHMENT	ATPER	800,00 €	

DMM SERIES

DMM120 / DMM130

DMM140 / DMM160

HYDRAULIC MULCHERS FOR SKID STEER LOADERS

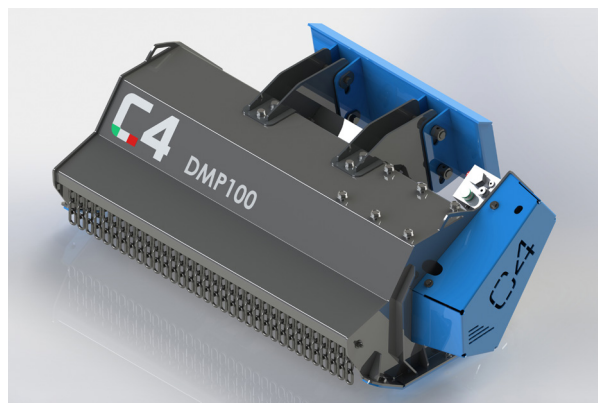


MODEL	DMM120	DMM130	DMM140	DMM160
	6.950,00 €	7.500,00 €	7.800,00 €	8.000,00 €
CUTTING WIDTH (mm)	1180	1280	1380	1580
WEIGHT (Kg)	420	450	470	485
OIL PRESSURE (bar)	200	200	200	200
OIL FLOW (l/min)	40-80	40-80	50-100	70-120
NUMBER OF HAMMERS	12	12	14	16
NUMBER OF KNIVES	36	36	42	48
MAX CUTTING DIAMETER (mm)	60	60	60	60
EQUIPPED WITH:				
<ul style="list-style-type: none"> - Replacable and adjustable anti-wear skid - Oscillating attachment system - 2mt hydraulic hoses - Standard with skid-steer attachment - Hydraulic piston motor and belt transmission - Hitch with 330mm width of lateral translation - Manual translation - Front protection with steel flaps and eversible rear roller scraper adjustable in height. - Rear roller onfigured in 6 different positions - Labyrinth seal rotor bearing protection - SKF rotor bearings 				
ACCESSORIES				
HYDRAULIC MOVEMENT KIT	SPOST_DMM		1.100,00 €	
CUSTOMIZED ATTACHMENT	ATPER		800,00 €	

DMP SERIES

DMP100

HYDRAULIC MULCHERS FOR COMPACT TRACK LOADERS AND EXCAVATORS **FROM 3 TO 5 TONS**



MODEL	DMP100	
	3.900,00 €	
CUTTING WIDTH (mm)	1000	
WEIGHT (Kg)	225	
OIL PRESSURE (bar)	200	
OIL FLOW (l/min)	30-80	
NUMBER OF HAMMERS	16	
NUMBER OF KNIVES	48	
MAX CUTTING DIAMETER (mm)	35	
EQUIPPED WITH:		
<div><div></div><div>- Direct transmission with cast iron engine inside the machine</div><div>- Fluidbox</div><div>- Replaceable wear-resistant skids.</div><div>- Adjustable rear support roller</div><div>- Oscillating bolted attachment system</div><div>- Front protection with chains and rear protection with wear-resistant rubber strip.</div><div>- 1.6 m hydraulic hoses</div><div>- Predisposition of excavator attachment</div><div>- Standard attachment for skid steer loader</div><div>- Labyrinth seal rotor bearing protection</div><div>- SKF rotor bearings</div></div>		
ACCESSORIES		
STANDARD ATTACHMENT FOR EXCAVATOR	ATS(AB)	440,00 €
KIT OF PINS FOR ATTACHMENT	PATS(AB)	150,00 €
SELF-LEVELING SUPPORT	ATA(A)	380,00 €
CUSTOMIZED ATTACHMENT	ATPER	800,00 €

TF / TF-L SERIES

TF160 / TF180 / TF200

TF160L / TF180L / TF200L

FORESTRY HYDRAULIC MULCHERS WITH
FIXED TEETH FOR SKID STEER LOADERS

TF-L Series with cutting depth reducer



MODEL	TF160	TF180	TF200
	21.800,00 €	22.500,00 €	23.600,00 €
MODEL (with cutting depth reducer)	TF160L	TF180L	TF200L
	23.600,00 €	24.500,00 €	25.800,00 €
CUTTING WIDTH (mm)	1560	1760	1960
TF WEIGHT (fixed teeth model)	980	1080	1200
TF-L WEIGHT (mod. with cutting depth reducer)	1020	1123	1250
OIL PRESSURE (bar)	250	250	250
OIL FLOW (l/min)	100-150	100-150	100-150
NUMBER OF TOOLS	36	40	48
MAX CUTTING DIAMETER (mm)	150	150	150

EQUIPPED WITH:

- Pressure gauge to monitor pressure peaks.
- Double-bottomed case
- Forestry fixed teeth rotor with interchangeable tools
- Rear protection with chains
- 3mt hydraulic hoses
- Replaceable anti-wear skids
- Cutting depth reducer on TF-L series
- Forestry arch with mechanical adjustment
- Skid-steer attachment
- Hydraulic piston motor
- Motor with anti-cavitation valve
- Front protection with hydraulically adjustable front door.
- Electrically operated six-way valve
- Labyrinth seal rotor bearing protection
- SKF rotor bearings

ACCESSORIES

VARIABLE DISPLACEMENT PISTON ENGINE	MTIPV_TF	3.300,00 €
CUSTOMIZED ATTACHMENT	ATPER	800,00 €
HYDRAULIC ARCH	ABB_IDR	2.800,00 €

T SERIES

T15 / T20 / T50

TV15 / TV20 / TV50

HYDRAULIC AUGERS FOR EXCAVATIONS
FROM 1.5 TO 10.5 TONS

TV Series available - augers with 1-pin attachment without locks



MODEL (multifunctional)	T15	T20	T50
	2.830,00 €	3.350,00 €	4.200,00 €
MODEL (1-pin attachment without locks)	TV15	TV20	TV50
	2.900,00 €	3.450,00 €	4.500,00 €
EXCAVATOR(TON)	1,5-3	3-5	5-10,5
WORKING TORQUE (N/M)	1500	2500	5000
WEIGHT (Kg)	80	135	172
WORKING PRESSURE (bar)	160	180	200
OIL FLOW (L/MIN)	20-40	30-60	45-80
ENGINE DISPLACEMENT (CC)	125	200	250
HEXAGON	50	50/70	50/70
SURCHARGE FOR 70MM HEXAGON	-	ES70_T20	ES70_T50
	-	800,00 €	1.200,00 €
EQUIPPED WITH:			
<ul style="list-style-type: none"> - Traction with reduced motor, inside the frame. - Upper attachment characterized by double joint mounted on self-lubricating bushings with possibility to block the rotations by screws (T SERIES) - 1.8 mt hydraulic hoses 			
ACCESSORIES	T15	T20	T50
STANDARD ATTACHMENT	ATS(T15)	ATS(T20)	ATS(T50)
	400,00 €	440,00 €	480,00 €
KIT OF PINS FOR ATTACHMENT	PATS(T15)	PATS(T20)	PATS(T50)
	120,00 €	140,00 €	190,00 €
ADAPTER FOR SKID-STEER ATTACHMENT	ATMIN_T	ATMIN_T	ATMIN_T
	1.600,00 €	1.600,00 €	1.600,00 €
ELECTRONIC INVERTER	INVEL	INVEL	INVEL
	600,00 €	600,00 €	600,00 €

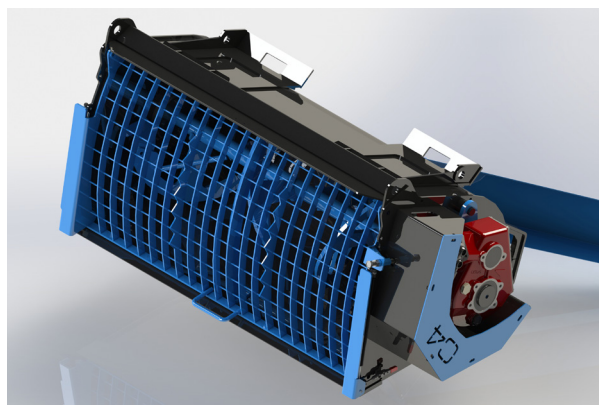
TIPS		HEXAGON 50	HEXAGON 70
STANDARD TIPS - 1000mm lenght			
DIAMETER 100	PS100	670,00 €	830,00 €
DIAMETER 150	PS150	720,00 €	880,00 €
HEXAGON 200	PS200	770,00 €	930,00 €
HEXAGON 250	PS250	850,00 €	980,00 €
HEXAGON 300	PS300	940,00 €	1.080,00 €
HEXAGON 350	PS350	980,00 €	1.150,00 €
HEXAGON 400	PS400	1.080,00 €	1.240,00 €
HEXAGON 500	PS500	1.300,00 €	1.400,00 €
ROCK TIPS - 1000mm lenght			
DIAMETER 100	PR100	980,00 €	1.150,00 €
DIAMETER 150	PR150	1.050,00 €	1.200,00 €
DIAMETER 200	PR200	1.150,00 €	1.300,00 €
DIAMETER 250	PR250	1.300,00 €	1.450,00 €
DIAMETER 300	PR300	1.400,00 €	1.500,00 €
DIAMETER 350	PR350	1.500,00 €	1.650,00 €
DIAMETER 400	PR400	1.650,00 €	1.750,00 €
DIAMETER 500	PR500	1.950,00 €	2.160,00 €
EXTENSION WITH PROPELLER - 1000mm lenght			
DIAMETER 100	PRLTE100	670,00 €	830,00 €
DIAMETER 150	PRLTE150	730,00 €	880,00 €
DIAMETER 200	PRLTE200	780,00 €	930,00 €
DIAMETER 250	PRLTE250	850,00 €	980,00 €
DIAMETER 300	PRLTE300	940,00 €	1.090,00 €
DIAMETER 350	PRLTE350	980,00 €	1.150,00 €
DIAMETER 400	PRLTE400	1.090,00 €	1.240,00 €
DIAMETER 500	PRLTE500	1.300,00 €	1.400,00 €
EXTENSION WITHOUT PROPELLER - 1000mm lenght			
	PRLT	700,00 €	800,00 €
CONICAL TIP (WOOD SPLITTER)			
DIAMETER 140	PCS140	1.130,00 €	-
DIAMETER 170	PCS170	1.680,00 €	2.000,00 €
DIAMETER 200	PCS200	2.060,00 €	2.320,00 €
DIAMETER 250	PCS250	-	3.250,00 €
STUMP GRINDER	2 BLADES		
DIAMETER 200 for MOD.T15 from 15 to 18 ql	FR200/2	1.600,00 €	-
DIAMETER 300 for MOD.T20 from 18 to 40 ql	FR300/2	2.060,00 €	-
DIAMETRO 400 PER MOD.T50 da 40 a 60 qli	FR400/2	2.370,00 €	2.660,00 €
STUMP GRINDER	3 BLADES		
DIAMETER 200 for MOD.T20 from 25 ql	FR200/3	1.850,00 €	-
DIAMETER 300 for MOD.T50 from 40 ql	FR300/3	2.370,00 €	2.660,00 €

BM / BM-H SERIES

BM150 / BM200 / BM250 / BM350
BM450 / BM150H / BM200H
BM250H / BM350H / BM450H

MIXING BUCKETS FOR SKIDSTEER LOADERS AND EXCAVATORS

BM-H series - available with collecting tank in hardox.



MODEL	BM150	BM200	BM250	BM350	BM450
	5.050,00 €	5.550,00 €	5.800,00 €	6.200,00 €	7.950,00 €
MODEL (with collecting tank in hardox)	BM150H	BM200H	BM250H	BM350H	BM450H
	5.450,00 €	6.050,00 €	6.500,00 €	7.000,00 €	8.900,00 €
WEIGHT (Kg)	200	310	350	450	510
FULL LOAD WIGHT (Kg)	500	780	930	1250	1500
MAX PRESSURE (bar)	140	200	250	350	450
CAPACITY UP TO SCREW (lt)	150	200	250	350	450

EQUIPPED WITH:

- Orbital motor with relief valve integrated. Transmission with reducer.
- Standard with 1.8mt hydraulic hoses and quick couplings.
- Slide with quick coupling mounted on a swivel ring.
- Mixer in hardox (BM series)
- Collecting tank, blades and mixer in hardox (BMH series)
- Standard skid steer attachment

ACCESSORIES

6-10 TON EXCAVATORS ATTACHMENT	ATS (BM6-10)	880,00 €
10-20 TON EXCAVATORS ATTACHMENT	ATS (BM10-20)	1.100,00 €
NON-STANDARD ATTACHMENT	ATPER	800,00 €
PREDISPOSITION FOR DOUBLE BOLTED ATTACHMENT FOR EXCAVATOR	ATESC	1.050,00 €
ELECTRIC ADAPTER FOR DOOR OPERATION WITH SWITCH (cigarette lighter)	ADA_ELETR	100,00 €
EXHAUST PIPE	TBSCAR	500,00 €
EASY OPENING OF PROTECTIVE GRID	APGRI	520,00 €

BS / BS-H SERIES

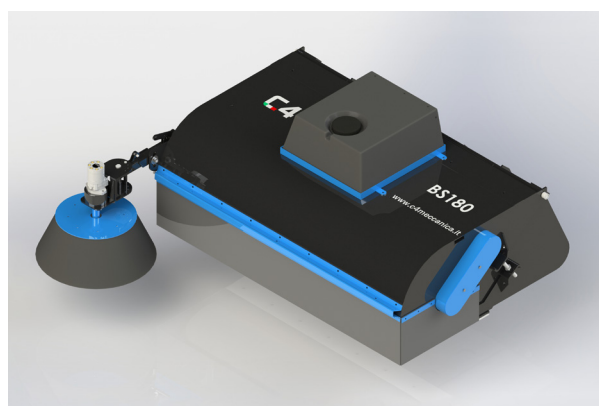
BS150 / BS165 / BS180 / BS210

BS150H / BS165H

BS180H / BS210H

SWEEPEING BUCKETS FOR SKID-STEER LOADERS

BS-H SEIRES - available with blade and collecting tank in hardox.



MODEL	BS150	BS165	BS180	BS210
	4.650,00 €	4.850,00 €	5.150,00 €	5.650,00 €
MODEL (With blade and collecting tank in hardox)	BS150H	BS165H	BS180H	BS210H
	5.200,00 €	5.400,00 €	5.800,00 €	6.400,00 €
BRUSH DIAMETER (mm)	560	560	560	560
WORKING WIDTH (mm)	1500	1650	1800	2100
WORKING WIDTH WITH BRUSH (mm)	1950	2100	2250	2550
WEIGHT (Kg)	400	425	450	500
PRESSURE (BAR)	180	180	180	180
CAPACITY (Lt)	450	480	510	560
BRUSHES	35	38	41	47

EQUIPPED WITH:

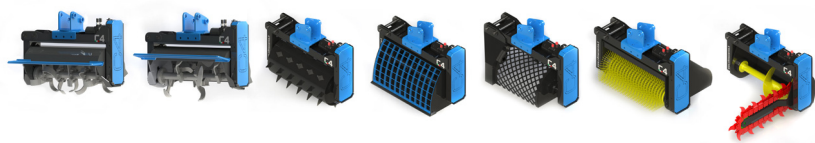
- Motor supported by extension with bearings inside the machine
- Chain transmission
- Front and side rubber protection.
- Standard attachment for skid-steer loader
- Blade and collecting tank in hardox (BSH series)
- 1.8mt hydraulic hoses
- Replaceable double-bevelled blade
- Quick couplings

ACCESSORIES

WATER SPRAY SYSTEM FOR FALL	for BS150 and BS165	SIAC (BS150/165)	620,00 €
	for BS180 and BS210	SIAC (BS180/210)	660,00 €
WATER SPRAY SYSTEM WITH ELECTRIC PUMP	for BS150 and BS165	SIAPE (BS150/165)	1.350,00 €
	for BS180 and BS210	SIAPE (BS180/210)	1.420,00 €
WATER SPRAY SYSTEM WITHOUT TANK (if already on the machine)	for BS150 and BS165	SIA (BS150/165)	620,00 €
	for BS180 and BS210	SIA (BS180/210)	660,00 €
HOSE KIT FOR SIDE BRUSH		TSPL	230,00 €
STEEL SIDE BRUSH		SPL	1.850,00 €
NON-STANDARD ATTACHMENT		ATPER	800,00 €

MULTITOOL

MULTIFUNCTIONAL EQUIPMENT FOR EXCAVATORS
1.8 TO 3 TONS

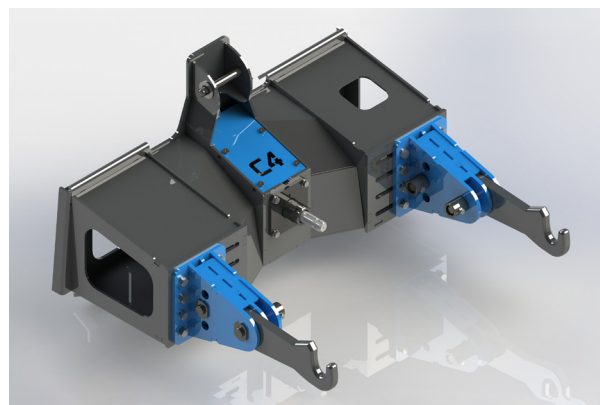


MODEL	MULTITOOL	
	2.200,00 €	
WEIGHT (Kg)	61	
OIL PRESSURE (bar)	200	
OIL FLOW (l/min)	20-50	

ACCESSORIES		
ATTACHMENT FROM 1.5 TO 3 TONS (weight 10-15kg)	ATS(A)	350,00 €
KIT OF PINS FOR ATTACHMENT	PATS(A)	100,00 €
CATENARY	3.000,00 €	
WEIGHT (Kg)	65	
NUMBER OF TOOLS	26	
CUTTING WIDTH (mm)	500	
DIGGING WIDTH mm	60	
AERATOR	1.200,00 €	
WEIGHT (Kg)	50	
WIDTH (mm)	700	
DIAMETER (mm)	335	
NUMBER OF POINTS	40	
ROTARY TILLER	750,00 €	
WEIGHT (kg)	50	
WIDTH (mm)	678	
WORKING DEPTH (mm)	125	
NUMBER OF TOOLS	8/20	
MIXING BUCKET	1.300,00 €	
WEIGHT (kg)	50	
CAPACITY' (lt)	70	
WIDTH (mm)	720	
SCREENING MACHINE	1.800,00 €	
WEIGHT (kg)	45	
DIAMETER (mm)	240	
WIDTH (mm)	490	
SWEEPING MACHINE	1.500,00 €	
WEIGHT (kg)	55	
WIDTH (mm)	490	
NUMBER OF BRUSHES	21	

MA ADAPTER

ADAPTER FOR THE USE OF AGRICULTURAL
EQUIPMENT ON SKID-STEER LOADERS



MODEL	MA ADAPTER
	7.000,00 €
WEIGHT (Kg)	240
OIL PRESSURE (bar)	200
OIL FLOW (l/min)	80-130
EQUIPPED WITH:	
<ul style="list-style-type: none">- Standard attachment for skid steer loader.- 3-point hitch arms Cat.1 / 2 adjustable in width and vertically up to 3 positions.- Orbital hydraulic motor	

SORTING GRAPPLES

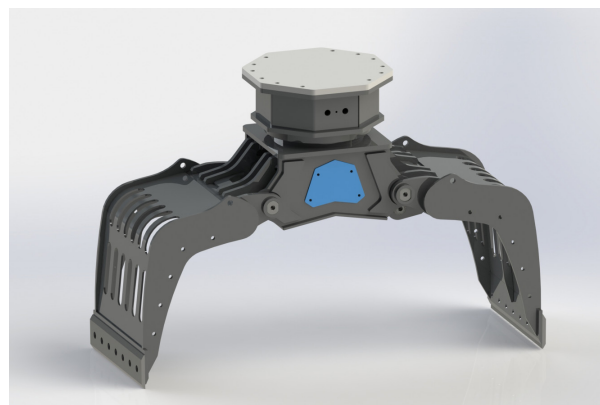
P10 / P15 / P20 / P25 / P30 / P40

Sorting grapple with bidirectional hydraulic rotation as standard

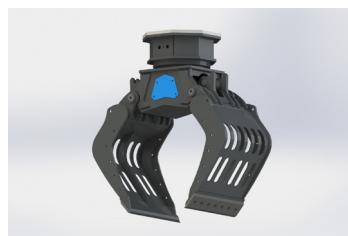
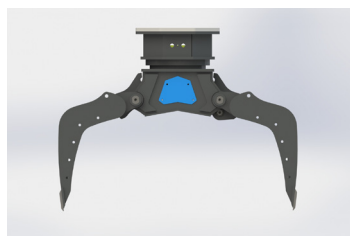
PF10 / PF15 / PF20 / PF25 / PF30 / PF40

Fixed sorting grapple, without hydraulic rotation

SUPPLIED WITH 1,8MT HYDRAULIC HOSES.



MODEL	P10	P15	P20	P25	P30	P40
PRICE WITH ROTATION	€ 6400,00	€ 7800,00	€ 8500,00	€ 9800,00	€ 11600,00	€ 12600,00
PRICE WITHOUT ROTATION	€ 4500,00	€ 4550,00	€ 4600,00	€ 4900,00	€ 9300,00	€ 10200,00
MACHINES (TON)	1,5>3,0	3>5	4>8	6>10	11>14	14,1>15
ROTATION ANGLE	360°	360°	360°	360°	360°	360°
WEIGHT (Kg) - P SERIES	120	260	330	410	700	800
WEIGHT (Kg) - FP SERIES	85	210	280	360	640	740
MAX CAPACITY (Lt.)	50	70	90	120	160	250
FULCRUM DISTANCE (D)	310	380	560	560	710	710
HEIGHT (E)	720	850	1010	1010	1210	1210
MAX PRESSURE CYLINDER (Bar)	220	250	250	250	250	250
CYLINDER FLOW RATE (L/min)	9	20	24	24	30	32
MAX ENGINE PRESSURE (Bar)	180	200	200	200	200	200
ENGINE FLOW RATE (L/min)	20	6	6	6	5	5



ACCESSORIES	CODE	P10	P15	P20	P25	P30	P40
SOLENOID VALVE KIT FOR SINGLE LINE HYDRAULIC ROTATION	ELETT-ROT	€ 1000,00	€ 1000,00	€ 1000,00	€ 1000,00	€ 1200,00	€ 1200,00
CURBS LIFTING	SOLCOR	€ 500,00	€ 520,00	€ 540,00	€ 570,00	€ 600,00	€ 700,00
SIDE PANELS	CHLAT	€ 240,00	€ 260,00	€ 280,00	€ 340,00	€ 400,00	€ 400,00
INTERCHANGEABLE TEETH	DINT	€ 180,00	€ 190,00	€ 220,00	€ 250,00	€ 300,00	€ 440,00
STANDARD ATTACHMENT	ATSP	€ 350,00	€ 440,00	€ 500,00	€ 500,00	€ 1500,00	€ 1800,00
KIT OF PINS	PATSP	€ 100,00	€ 150,00	€ 180,00	€ 180,00	€ 330,00	€ 350,00

TS SERIES

TS120 / TS170 / TS180 / TS200

HEDGE TRIMMERS FOR EXCAVATORS

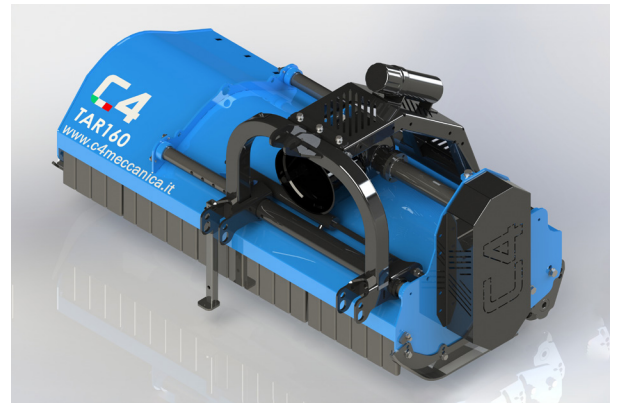


MODEL	TS120	TS170	TS180	TS200
	2340,00 €	2500,00 €	2640,00 €	2900,00 €
WEIGHT (Kg)	50	60	65	70
MAX CUTTING WIDTH (mm)	30	30	30	30
LENGTH (mm)	1270	1710	1870	2050
WIDTH (mm)	400	400	400	400
MAX PRESSURE (Bar)	200	200	200	200
OIL FLOW (l/min) – Depends on motor installed	15-40	15-40	15-40	15-40
EQUIPPED WITH:				
<ul style="list-style-type: none"> - 2m hydraulic hoses. - Flat plate for attachment 				
ACCESSORIES				
ATTACHMENT FOR TS120	ATS(TS120)		400,00 €	
KIT OF PINS FOR TS120 ATTACHMENT	PATS(TS120)		100,00 €	
ATTACHMENT FOR TS170-180-200	ATS(TS)		450,00 €	
KIT OF PINS FOR TS170-180-200	PATS(TS)		150,00 €	
ATTACHMENT WITH ADJUSTABLE INCLINATION	ATREG		350,00 €	

TAR SERIES

TAR120 / 130 / 140 / 150 /
160 / 180 / 200

REVERSIBLE AGRICULTURAL MULCHERS



MODEL	TAR120	TAR130	TAR140	TAR150	TAR160	TAR180	TAR200
	€ 4150	€ 4500	€ 4650	€ 4900	€ 5100	€ 5250	€ 5550
CUTTING WIDTH (mm)	1160	1260	1360	1460	1560	1760	1960
WEIGHT (Kg)	360	390	410	420	425	460	480
NUMBER OF KNIVES	36	36	42	42	48	54	60
NUMBER OF HAMMERS	12	12	14	14	16	18	20
MAX CUTTING DIAMETER (mm)	60	60	60	60	60	60	60

EQUIPPED WITH:

- Replaceable wear-resistant skids, adjustable in three positions
- Three-point hitch
- Front protection with steel strips
- Rear support roller
- Attachment with lateral translation of 330mm

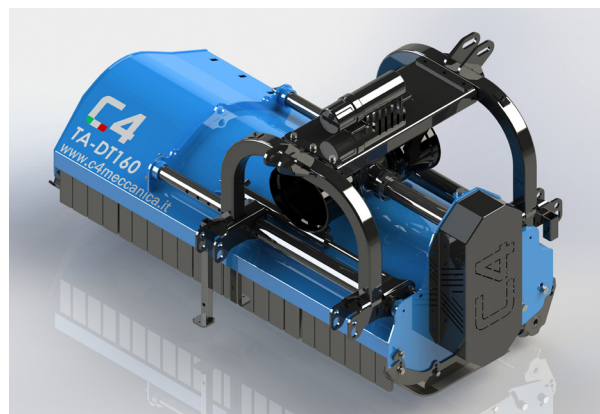
ACCESSORIES

HYDRAULIC SYSTEM	SPOST_TAR	€ 435,00
STANDARD CARDAN SHAFT 120	CARD_TAR120	€ 260,00
STANDARD CARDAN SHAFT 130-180	CARD_TAR	€ 315,00
STANDARD CARDAN SHAFT 200	CARD_TAR200	€ 360,00
REAR RODS KIT 120	AS_POS120	€ 170,00
REAR RODS KIT 130	AS_POS130	€ 190,00
REAR RODS KIT 140	AS_POS140	€ 200,00
REAR RODS KIT 150	AS_POS150	€ 210,00
REAR RODS KIT 160	AS_POS160	€ 230,00
REAR RODS KIT 180	AS_POS180	€ 260,00
REAR RODS KIT 200	AS_POS200	€ 290,00

TA-DT SERIES

TA-DT120 / 130 / 140 / 150 /
160 / 180 / 200

AGRICULTURAL MEDIUM DOUBLE PTO MULCHERS



MODEL	TA-DT120	TA-DT130	TA-DT140	TA-DT150	TA-DT160	TA-DT180	TA-DT200
	€ 4300	€ 4600	€ 4800	€ 4900	€ 5200	€ 5500	€ 5700
CUTTING WIDTH (mm)	1160	1260	1360	1460	1560	1760	1960
WEIGHT (Kg)	360	390	410	420	425	460	480
NUMBER OF KNIVES	36	36	42	42	48	54	60
NUMBER OF HAMMERS	12	12	14	14	16	18	20
MAX CUTTING DIAMETER (mm)	60	60	60	60	60	60	60

EQUIPPED WITH:

- Replaceable wear-resistant skids, adjustable in three positions
- Three-point hitch
- Attachment with lateral translation of 330mm
- Attachment in "double PTO" version
- Front protection with steel strips
- Rear support roller
- Transmission made with gear box and belts

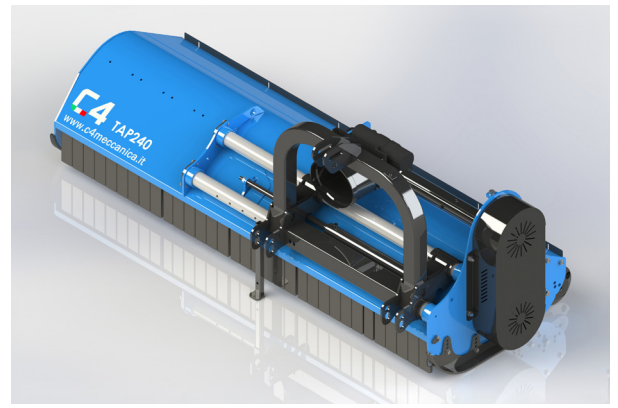
ACCESSORIES

HYDRAULIC SYSTEM	SPOST_TAR	€ 435,00
STANDARD CARDAN SHAFT 120	CARD_TAR120	€ 260,00
STANDARD CARDAN SHAFT 130-180	CARD_TAR	€ 315,00
STANDARD CARDAN SHAFT 200	CARD_TAR200	€ 360,00
REAR RODS KIT 120	AS_POS120	€ 170,00
REAR RODS KIT 130	AS_POS130	€ 190,00
REAR RODS KIT 140	AS_POS140	€ 200,00
REAR RODS KIT 150	AS_POS150	€ 210,00
REAR RODS KIT 160	AS_POS160	€ 230,00
REAR RODS KIT 180	AS_POS180	€ 260,00
REAR RODS KIT 200	AS_POS200	€ 290,00

TAP SERIES

TAP160 / 180 / 200 / 220 / 240

AGRICULTURAL HEAVY DUTY MULCHERS

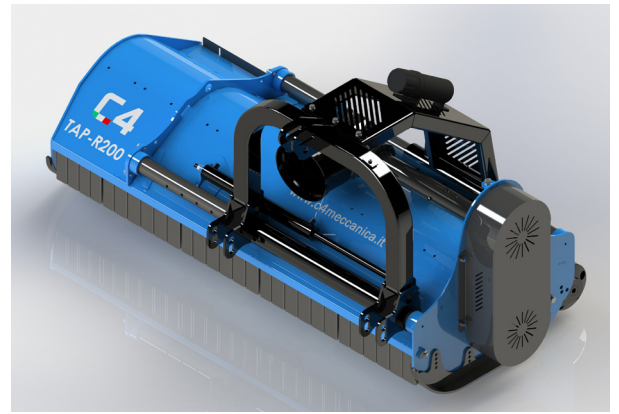


MODEL	TAP160	TAP180	TAP200	TAP220	TAP240
	€ 6200	€ 6600	€ 7300	€ 7900	€ 8300
CUTTING WIDTH (mm)	1600	1800	2000	2200	2400
WEIGHT (Kg)	625	665	705	745	785
NUMBER OF KNIVES	54	54	60	66	72
NUMBER OF HAMMERS	18	18	20	22	24
MAX CUTTING DIAMETER (mm)	80	80	80	80	80
EQUIPPED WITH:					
<ul style="list-style-type: none"> - Replaceable wear-resistant skids, adjustable in three positions - Three-point hitch - Front protection with steel strips - Rear support roller - Hitch with 465mm side shift - Transmission made with gear box and belts 					
ACCESSORIES					
HYDRAULIC SYSTEM	SPOST_TAP	€ 480,00			
CARDAN SHAFT 160-200	CARD_TAP160	€ 370,00			
CARDAN SHAFT 220-240	CARD_TAP220	€ 450,00			
ADDITIONAL COUNTER-KNIFE 160	CON_COL160	€ 140,00			
ADDITIONAL COUNTER-KNIFE 180	CON_COL180	€ 150,00			
ADDITIONAL COUNTER-KNIFE 200	CON_COL200	€ 160,00			
ADDITIONAL COUNTER-KNIFE 220	CON_COL220	€ 170,00			
ADDITIONAL COUNTER-KNIFE 240	CON_COL240	€ 190,00			

TAP-R SERIES

TAP-R160 / 180 / 200 / 220 / 240

AGRICULTURAL REVERSIBLE
HEAVY DUTY MULCHERS

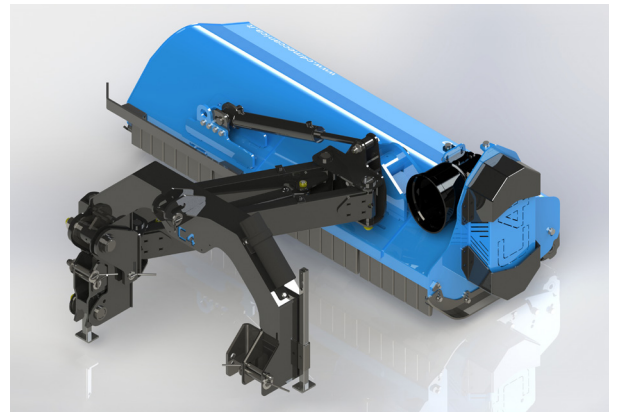


MODEL	TAP-R160	TAP-R180	TAP-R200	TAP-R220	TAP-R240
	€ 6400	€ 6800	€ 7500	€ 8000	€ 8400
CUTTING WIDTH (mm)	1600	1800	2000	2200	2400
WEIGHT (Kg)	625	665	705	745	785
NUMBER OF KNIVES	54	54	60	66	72
NUMBER OF HAMMERS	18	18	20	22	24
MAX CUTTING DIAMETER (mm)	80	80	80	80	80
EQUIPPED WITH:					
<ul style="list-style-type: none"> - Replaceable wear-resistant skids, adjustable in four positions - 3-point arch made of welded carpentry - Front protection with steel strips - Rear support roller - Hitch with 465mm side shift - Transmission made with gear box and belts 					
ACCESSORIES					
HYDRAULIC SYSTEM	SPOST_TAP			€ 480,00	
STANDARD CARDAN SHAFT 160-200	CARD_TAP160			€ 370,00	
STANDARD CARDAN SHAFT 220-240	CARD_TAP220			€ 450,00	
ADDITIONAL COUNTER-KNIFE 160	CON_COL160			€ 140,00	
ADDITIONAL COUNTER-KNIFE 180	CON_COL180			€ 150,00	
ADDITIONAL COUNTER-KNIFE 200	CON_COL200			€ 160,00	
ADDITIONAL COUNTER-KNIFE 220	CON_COL220			€ 170,00	
ADDITIONAL COUNTER-KNIFE 240	CON_COL240			€ 190,00	

TALM SERIES

TALM140 / 160 / 180 / 200

AGRICULTURAL MEDIUM LATERAL MULCHERS



MODEL	TALM140	TALM160	TALM180	TALM200
	€ 7000	€ 7500	€ 7800	€ 7900
CUTTING WIDTH (mm)	1400	1600	1800	2000
WIDTH (mm)	1650	1850	2050	2250
WEIGHT (Kg)	560	595	645	685
NUMBER OF KNIVES	42	48	54	60
NUMBER OF HAMMERS	14	16	18	20
MAX CUTTING DIAMETER (mm)	60	60	60	60

EQUIPPED WITH:

- Replaceable wear-resistant skids, adjustable in three positions
- 3-point arch made of welded carpentry
- 3-point hitch with safety connecting rod
- Double parallelogram arm system
- Overall lateral translation of approximately 120cm
- 3-point bow with rotation system
- Transmission made with gear box and belts
- Rear idler roller can be configured in 6 different positions
- Front protection with steel strips
- Rear support roller

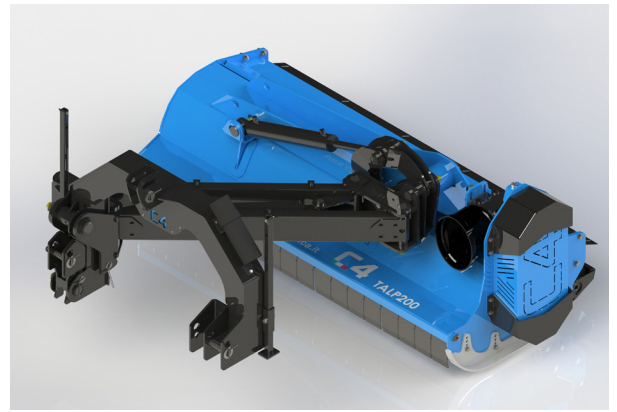
ACCESSORIES

STANDARD CARDAN SHAFT	CARD_TALM	€ 650,00
HOMOCINETIC CARDAN SHAFT	CARD_OMO	€ 2200,00

TALP SERIES

TALP180 / 200 / 220 / 240

AGRICULTURAL HEAVY DUTY LATERAL MULCHERS



MODEL	TALP180	TALP200	TALP220	TALP240
	€ 13800	€ 14500	€ 14700	€ 15400
CUTTING WIDTH (mm)	1800	2000	2200	2400
WEIGHT (Kg)	1200	1250	1300	1350
NUMBER OF KNIVES	54	60	66	72
NUMBER OF HAMMERS	18	20	22	24
MAX CUTTING DIAMETER (mm)	80	80	80	80

EQUIPPED WITH:


- Replaceable wear-resistant skids, adjustable in four positions
- 3-point arch made of welded carpentry
- Double parallelogram arm system that allows to obtain an overall lateral translation of approximately 150cm
- 3-point bow with rotation system
- Transmission made with gear box and belts
- Rear door adjustable to two positions and removable
- Front protection with steel strips
- Rear support roller

ACCESSORIES


STANDARD CARDAN SHAFT	CARD_TALM	€ 650,00
HOMOCINETIC CARDAN SHAFT	CARD_OMO	€ 2200,00




CONTACTS

 Zona industriale Buzzacchero snc
06019 Umbertide (PG)


 WWW.C4MECCANICA.IT

   C4 MECCANICA

 +39 075 941 59 98

 +39 327 533 50 88

 +39 075 941 64 10

 info@c4meccanica.it

